



**Gem & Lapidary News**  
**July**  
**2023**

Print Post Approved PP243352/00002  
ISSN 2208-5556

Vol 49

No. 6

**Gem & Lapidary News** is the official publication of the Gem and Lapidary Council of NSW Inc, PO Box 188 Orange 2800. The executive and workforce of the Council are entirely composed of delegates from member Clubs. Council is NOT an autonomous body. The Gem & Lapidary Council is a member of AFLACA (Australian Federation of Lapidary and Allied Crafts Association). **Life Councillors:** Joan Ball (dec), Ron Beattie, Arthur Roffey (dec), Frank Hall (dec), Dot Caladine (dec), Maurya Hutton (dec), Marie Jenkins (dec), Dick Moppett (dec) & Bob Wright (dec).

**EXECUTIVE**

President	Barbara Try O.A.M. (Northern Districts) 0417 676 435
Senior Vice President	Tony Offord (Port Hacking)
Vice president	Tony Try (Central Coast)
Secretary	Kathy Selwood (Orange) 6362 7917 secretary@gemlapidarycouncilnsw.org.au
Minutes Secretary	Mick Lane (Blue Mountains)
Treasurer	Bob McLean (Port Hacking)
Assistant Treasurer	Tony Offord (Port Hacking)
Committee:	Sue O'Neil (Goulburn) Joe O'Neil (Goulburn) Marcia Hill (Western Suburbs)

**APPOINTMENTS**

Public Officer	Tony Offord
Auditor	Colin Russell
Editor	David Wilson editor@gemlapidarycouncilnsw.org.au
Webmaster	Alex Maitland (Temporary Webmaster) webmaster@gemlapidarycouncilnsw.org.au
Equipment Officer	Mick Lane
G&L News Mailman	Sue O'Neil
Education Officer	Paul Sabolta
GEMBOREE Coordinator	Tony Offord
GEMKHANA Coordinator	Bob McLean with Tony Offord
AFLACA delegates	Barbara Try (voting) and Tony Try (non-voting)
AFLACA J&R delegates	Barbara Try (voting) and Kathy Selwood (non-voting)

**COUNCIL MEETINGS****Visitors welcome to attend**

EXECUTIVE meet monthly, fourth Wednesday of the month, 1pm, at Clubrooms, Parramatta-Holroyd Lapidary Club, 73 Fullager Rd, Wentworthville, NSW

**NEXT COUNCIL MEETING: July 26, 2023**

## EDITOR'S NOTES

Until recently I was co-editor of the Canberra Lapidary Club Newsletter, since we were stood down from that role by the Committee and with some spare time on my hands I thought I would take on the Editors role for the Gem & Lapidary Council as they had been advertising for an editor for quiet a while. I have never used Microsoft publisher before so please bear with me.

---

## ADDRESSES

**for the Gem & Lapidary Council NSW**

**Website :** [http://gemlapidarycouncilnsw.org.au /](http://gemlapidarycouncilnsw.org.au/)

The website has links to the **secretary, editor & webmaster**

**Online edition of the newsletter is in colour.**

**Post :** Gem & Lapidary Council NSW, PO Box 188, Orange NSW, 2800

**Meeting rooms:** Parramatta-Holroyd Lapidary Club,  
73 Fullagar Rd, Wentworthville, NSW

---

## DEADLINES:

Third Wednesday of the month—a few days grace is allowed.

CONTACT THE G&L EDITOR TO INCLUDE YOUR CLUB'S NEWS

**[editor@gemlapidarycouncilnsw.org.au](mailto:editor@gemlapidarycouncilnsw.org.au)**

---

## ADVERTISING RATES

**per G&L News edition**

(NB: printed in black & white)

Full page - \$40    1/2 page - \$25    1/3 page - \$20

Please send payment with advertising booking and copy

---

**Disclaimer:**

Opinions expressed are those of the original authors and do not necessarily reflect those of the Editor, Gem & Lapidary Council, or its members. Persons acting on any opinion, advice, fact or advertisement published in this issue does so at their own risk.

<b>Contents</b>	<b>Page(s)</b>
G & L Council Information	2
Editor's Notes and Council contact information.	3
Message from the President	4
Committee Meeting Minutes—Baryte & Dolomite— Copper	5-6
Campbelltown & District Lapidary Club & Blaxland Gem & Mineral Club	7
Yowah Bound	8-10
Colin's Corner: Geology of the Sutherland Shire	10-11
Important Gemkhana Entries	12
Faceting Judges Course	13
State Gem and Mineral Flyer	15
Events	16



### **Message from the President**

Well, June the 30<sup>th</sup> has passed and the Gem and Lapidary Council has received a total of twelve requests for the educational/teaching courses.

Six regional/country clubs and six metropolitan clubs have asked for these courses with the most popular course being enameling, followed by wire wrapping, then carving of both bone and scrimshaw, then cabochon, faceting, and jewellery. It is hoped that we will be able to complete these courses by the end of February next year.

The other major item on our calendar is the State Gem and Mineral Show which incorporates the GEMKHANA competition. This event is on the 23<sup>rd</sup> & 24<sup>th</sup> September 2023 at the Hawkesbury District Agricultural show grounds, Clarendon.

We are encouraging member Clubs to have a free table inside the hall to sell Club wares and prompt their activities.

We look forward to seeing as many Club members join us at the Show.

Barbara J Try O.A.M.

President

**Minutes of the COMMITTEE MEETING of 28 June 2023****Held at Parramatta Holroyd Club Fullagar Rd Wentworthville**

**The meeting** was opened at 1:00pm by President Barbara Try (Northern Districts) who welcomed delegates from the following clubs: Central Coast (Tony Try), Parramatta/Holroyd (Ray Powell), AFG (Paul Sabolta), Western Suburbs (Marcia Hill, Ainslie Flynn), Port Hacking (Tony Offord), Orange (Kathy Selwood), Bathurst (Robert Porter), Blue Mountains (Mick Lane)

**Apologies:** Blue Mountain (Kim Cooke), Illawarra (Joan Zealy), Goulburn (Joe & Sue O'Neil), Blaxland (Pam & Alec Gardiner). **Moved:** AFG, **seconded** Parramatta/Holroyd that apologies be accepted.

**Minutes of the Previous Meeting: 24 May 2023** - with amendment trailer rego & check came to \$232.00. **Moved** Central Coast, **seconded**, Blue Mountain that minutes be accepted.

**Correspondence:** See attached list. **Business Arising:**

1/Bob McLean resignation as treasurer – **Motion 1:** That signatures on the Gem & Lapidary Council of NSW accounts and electronic banking (internet banking) change to ; Barbara Try President (current signature); Tony Offord (vice president) new; Kathy Selwood (secretary) new. **Moved** Parramatta/Holroyd **seconded** Western Suburbs. Motion put 9 for none against. **Motion 2:** That the owner of the Westpac tap & go for Gem & Lapidary Council of NSW, be change from Bob McLean to Barbara Try. **Moved** Parramatta/Holroyd **seconded** Western Suburbs. Motion put 9 for none against.

2/ State Library legal deposit reminder – check with Sue about hard copy sent.

3/ State Gem & Mineral Show advertising – discuss in reports. **Moved:** Orange, **seconded** Bathurst that Inward Correspondence be received, Outward Correspondence be endorsed and business arising be approved.

**Treasurer's Report:** **Treasurer's report accepted** **Moved:** Northern Districts **seconded:** Central Coast

**J&R Report:** 4 dates for judging

1/ State Gem & Mineral Show/ GEMKHANA judging 2 September

2/ Central Coast 16 September

3/ Illawarra 8 or 15 October to be advised

4/ Parramatta/Holroyd show judging 21 October

**GEMKHANA Competition:** 1/ First GEMKHANA competition entries received

**Webmaster:** - No Report

**G&L NEWS Editor:** Yes we have an Editor – David Wilson from Canberra

**Education Report:** 1/ Education/teaching course for Member Clubs – max numbers of students 10, Tutors being contacted. **Motion:** If no billeting available that accommodation be set at \$100.00 per night (if more, tutor will pay difference) & petrol for travel (receipt needed). **Moved:** Northern Districts **seconded** Orange - Motion put 9 for none against. **11 Clubs nomination so far.**

**Social Media:** Family pass entry both days, Kids packs-fossils & polished rocks, Query inviting Govt Depts?; Bobs letter from correspondence- Costing, what format what will be benefices?; Kim's how much does she require regards promotion costing, what platforms. ; Half or quarter add Australian Gem & Treasure magazine. ; Budget \$6,000.00 for advertising need to co-ordinate Kim – Bob - Tony O. ; Letter to be sent to Hawkesbury Valley Club inviting them if they wish for free club table at State Gem & Mineral Show.

**Mail Person:** No Report

**State Gem & Mineral Show**

1/ 20 Corflute signs A1 size 60, & Garden stakes to be purchased.

2/ Large signs 2 to be purchased others to have colour changed - see Kim for advice

3/ Advertising local papers quarter page.

4/Where did you hear about GEMKHANA? Survey completed.

5/ Catering – coffee Van & Lions club have said yes.

6/ Only 3 clubs have taking up free tables at show, Western Suburbs, Northern Districts, AFG (demonstration).

- 7/ Booking of ATM 2 GO. Tony O to follow up.
- 8/ Camping fees/cost to be sort from showground.
- 9/ Club asked to put flyer up on their media and in their newsletters.
- 10/ Sausage BBQ suggest for lunch for judging day, otherwise BYO.

**GEMBOREE**

- 1/ Narrabri to be checked.
- 2/ Secretary to touch base with Parkes show ground.

**Reports to be accepted moved:** Western Suburbs, Seconded: Bathurst

**GENERAL BUSINESS:**

- 1/ GEMBOREE 2024 please view web as there are changes to booklet especially faceting diagrams and trophy allocations.
- 2/ GEMBOREE 2025 – Schedule being looked at,
- 3/ J & R committee to convene a meeting following the July G & L Council meeting.
- 4/ Batemans Bay to be made for this year only, honorary member due to extraordinary circumstances.

**Moved:** Blue Mountain Seconded: Parramatta/Holroyd that General Business be accepted.

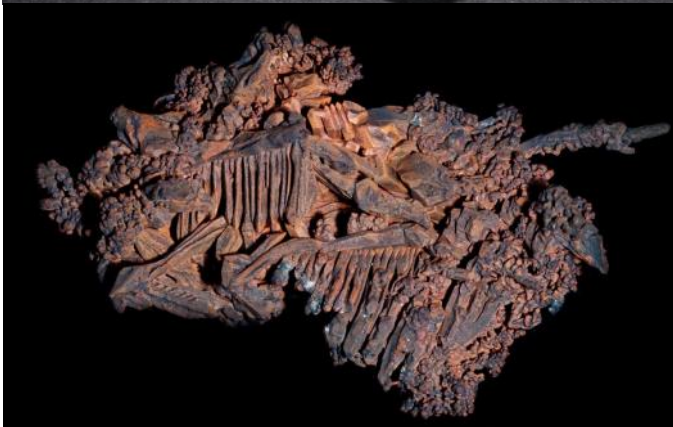


**Baryte & Dolomite -**  
BaSO<sub>4</sub>

**Specimen Size:**  
110mm X 71mm X  
30mm

**Specimen Locality:**  
Frizington, West  
Cumberland Ore  
Field, Cumbria,  
England

**Crystal System:**  
Orthorhombic



**Copper – Cu**

**Specimen Size:** 69mm X  
40mm X 21mm

**Specimen Locality:**  
Proprietary Mine, Broken  
Hill, Yancowinna Co.,  
NSW, Australia.

**Crystal System:**  
Isometric



**Campbelltown and Districts Lapidary club**  
Annual Gem, Mineral and Jewelry Exhibition

Where: Greg Percival Community Centre  
When: 8th/9th July 2023  
Entry \$10 | kids under 14 Free with paying adult  
Sat: 9:30am-5:00pm  
Sun: 9:30am-4:00pm  
*Food and Drinks available Lucky Door Prize*

If you are interested in hand-made jewellery, crystals and gems, this is the exhibition to visit! we will have a variety of stalls selling rough and tumbled stones as well as Opals and Agates. If you're getting into making jewellery we will also have findings!

Phone: (02) 9618 3206  
Email: [ctownlapidaryclub@bigpond.com](mailto:ctownlapidaryclub@bigpond.com)

**ABOUT US!**  
Lapidary - adjective relating to the engraving, cutting, or polishing of stones and gems.  
noun a person who cuts, polishes, or engraves gems.

**Future Events**

- Club Open Day/Market  
October 2023 Date TBA

**Club House**  
Lot 1 Bensley Road, Macquarie Fields

Look up Campbelltown Lapidary Club on Google Maps

**Blaxland Gem & Mineral Club Annual Gem Show 2023**



Sat & Sun 19-20 August  
8:30am - 4pm Daily  
Glenbrook Cinema Hall,  
Ross Street, Glenbrook  
*Addressing Glenbrook, Thebus*

Displays and Sales of Lapidary work, gems, rocks, minerals, opals and jewelry.

Entry Adults \$3 Children \$1 Family \$5




See for details of Blaxland Gem & Mineral Club

## Yowah Bound

As you may be aware, if you have been reading the Canberra Lapidary Clubs Newsletter over the years, Ellie and I try to get to Yowah in South West Queensland each year for their Opal Festival. We end up spending a few months enjoying the friendly atmosphere of the small town.

Well, as usual, we left Canberra later than we had planned but we were only going as far as Canowindra for the first stop so it was not too bad. Although we were headed to Brisbane first, we prefer to go inland than up the coast road through Sydney. Our next stop was Coonabarabran followed by Texas Queensland.

We passed through Texas earlier this year (yes, our second time to Brisbane this year, first time was for the Gemboree at Dayboro) and thought it may be an interesting place to stopover this time around. The caravan park is small about 8 sites and five or so cabins but the facilities are very good and reasonably modern.

Where is Texas QLD you ask? Well it's on the banks above the Dumaresq River just north of Bruxner Highway between Goondiwindi 114km and Tenterfield 116km. As it is on the river it is prone to flooding which happened in 1890, 1921 and 2011 as well as a serious rabbit plague in the 1920s. The 1890 flood forced the town to move 2 km north to higher ground. Prior to the arrival of Europeans, the area was home to the Bigambul First Nation peoples. After the arrival of the sealers its main economy was tobacco, sheep and cattle, with a rabbit processing factory opening during the rabbit plague years.

There are a number of things to see and do in and around Texas like the heritage and tobacco museum which is only open on Saturdays between 9:30 and 1:30 unless you make an appointment, Texas Cultural Centre and Regional Art Gallery and the Texas Historical Rabbit Processing Works.

Next it was off to Brisbane for a couple of nights, Well, Tanah Merah caravan park at least so that we could visit Ellie's aunt in Sunnybank Hills. The caravan park is tight with mostly cabins and is unfortunately on the noisy Pacific Highway with its continual traffic and pollution to go with it.

Relief came when we headed down to Murwillumbah for the Northern Rivers Crystal and Craft festival over the Kings birthday long weekend. We arrived at the showgrounds on the Thursday and left to head west on the Tuesday morning after a pleasant, quiet and non-polluted stay and profitable tailgating show for us as well.

Next planned stop was back to Texas with a pleasant drive from Murwillumbah though Tenterfield. But at 3:30 pm, 85 km west of Tenterfield on the Bruxner Highway BANG, the right rear brand new tyre blew (4 new tyres fitted to the BT 50 four days before we left Canberra). Oh, what fun and games pulling up with caravan in



tow (no traffic coming the other way thank God). Luckily the verge was wide enough to pull off the road far enough to change the tyre. Well, attempted to change the tyre.

I have never had to change a tyre on the MAZDA BT50 since we purchased it in 2015 so the spare had never seen the road, so a bit of fiddling to get everything ready to undo the wheel nuts and then change the tyre. Well, MAZDA's wheel nut wrench would not go onto the nuts. Checked the other wheels with the wrench and could only get it to fit one nut. Tried my wheel brace 19mm would not fit 21 mm was too loose. A nice local farmer stopped to see if we needed a hand and as I could not get these nuts off, we gladly said yes, he dropped his kids at home (school run) and came back with an assortment of sockets, but no go, still could not get anything to fit.

As we were in a black spot for the phone, unless you stood on one leg on the tail-gate with your tongue pointing in the right direction (well you get the picture), he drove me to where I could call the NRMA. Great, they would be out in 1 hour I was told, so farmer left for home, well twenty to nine the NRMA guy arrived. In all the time we were on the side of the road, of the 12 vehicles that passed us 4 stopped to offer assistance and to see if we were OK, only a few cars and a truck passed us after night fell.

Well, the NRMA guy got the tyre changed very quickly. I now know MAZDA have a chrome cover over an 18 mm nut making the final size 19mm, but if you use a rattle gun (impact wrench) especially with a double hex socket you distort and twist this chrome cover. Solution get a 19mm single hex socket, line it up and hammer it on, this will generally straighten the chrome cover enough to allow you to undo and retighten the wheel nuts with your 19mm wrench/socket. Permanent solution would be to remove all the chrome covers and have an 18mm socket handy or replace all the wheel nuts with standard nuts. Standard nuts are looking good to me.

Even though it was a full-size spare I kept the speed down to 70kmh being 9pm at night, foggy and rabbits and kangaroos jumping all over the road it was a slow 40km run into the caravan park to Texas. Next morning, it was round to the tyre shop to get a new tyre, unfortunately they did not have any Bridgestone tyres, so I had to settle for one with a similar tread and profile, so it's on the road with the old, now 50km used spare, back where it belongs. I will be talking to Bridgestone when we get back to Canberra.

Well after an overnight stay in St George and Cunnamulla we arrive in Yowah at midday Friday with a big sigh of relief as we will be here for a while and not have to worry about tyres and driving as the opal festival is not on till 15 July.



## COLIN'S CORNER: GEOLOGY OF THE SUTHERLAND SHIRE

The story begins about 300 million years ago in what geologists call the Permian period. At that time a shallow sea with swampy bays and shallow lakes stretched along the central NSW coast from Bateman's Bay to Port Stephens and inland to Berrima, Lithgow and Mudgee.

Into this sea, sand, silt, mud and gravels were carried by broad rivers from the south-west and north-west. This sediment formed large deltas at the river mouths, which gradually built out the land towards the east. In sheltered swampy regions layers of peat were formed, while elsewhere communities of marine animals flourished.

In the area south of Wollongong there were a few small volcanoes from which the lava flowed to cover a few square miles.

During the Permian and Triassic periods, the continued deposition of sediment pressed down the underlying, already deposited sediment into compact layers. During and after sedimentation slow movements of fluids through the layers helped complete the transformation from sediment to rock.

Thus about 180 million years ago the rock masses which concern us had been formed. The oldest rocks in the area are the Illawarra Coal Measures. While not exposed in the Shire there is evidence from drilling that these rocks underlie the

Shire. The topmost rock unit is the Bulli Seam – about 2.43m thick. This is worked at Helensburgh where it is 305m below sea level. It is exposed in the sea cliffs at Coalcliff. At Heathcote it is 427m below the surface and about 610m in the Sutherland area.

Above the coal bearing rocks is found the Narrabeen Group. This sequence of strata was first studied in the Narrabeen area north of Sydney, where it was named. The sequence is known (from drill holes) to occur beneath Sydney, and it comes to surface again in the southern part of the Sutherland Shire. In the Shire it is about 305m thick.

The Narrabeen Group mostly consists of layers of sandstone but it also contains some very characteristic red claystone beds up to 36.5m thick. Although best exposed at Stanwell Park they can be studied in the upper reaches of the Hacking River.

Overlying the Narrabeen Group is the rock unit which could be said to be most characteristic of the Shire. This is the 183m thick Hawksbury sandstone. There are occasional layers of shale up to 6m thick within the Hawksbury sandstone – for example, in the parking lot at Cape Solander in Captain Cook's Landing Place. The sandstone is made up almost entirely of grains of quartz cemented by clay, silica or other substances.

The Hawkesbury sandstone was overlain by a shale unit called the Ashfield Shale. Most of the unit has been removed by erosion but occasional patches remain such as at Kirrawee, Engadine and Heathcote.

At some time later (about 50 million years ago), minor volcanic activity occurred in the region. This took the form of intrusion of a number of dykes (long narrow vertical masses) of basaltic rock which forced its way through the sedimentary rocks.

When the molten volcanic rock cooled it was originally quite hard. However, due to the action of the weather the basaltic rock of the dykes has changed to clay. Most dykes in the area are now quite soft.

Typical examples occur at the Kurnell peninsular, in the shallow railway cutting north of Engadine and in the spillway of Woronora Dam.

Occasionally the heat of the molten rock altered the sandstone as it forced its way through. The sandstone then became much harder than usual, and sometimes forms small polyhedral columns. An example of this can be seen near the Bundeena wharf.

*Thanks to Colin Russell for putting this article together, with special consideration for the geology of our own locality. Taken - from Port Hacking "In the Loupe" May-June Newsletter*

# STATE GEM AND MINERAL SHOW GEMKHAHA COMPETITION 2023 COMPETITION ENTRIES

## IMPORTANT PLEASE SEE GEMKHANA 2023—COMPETITION SCHEDULE AND CONDITIONS

<https://gemlapidarycouncilnsw.org.au/wp-content/uploads/2023/01/FULL-SCHEDULE-with-diagrams-2023-01-24.pdf>

**NOTE:** Entry fees and entry forms for all entries must be received by the 18 August if sending by post. If hand delivered by you have till the 23 August 2023.

**Please:** refer to the Competition Schedule and conditions for exact detail for your entries as some entries have to be received on these dates also.



So start finalising  
those entries



## Robilt Lapidary Supplies

167 Endeavour Drive, North Cranbourne 3977

P.O. Box 179 Doveton, Victoria 3177

Ph: (03) 5996 0750 Fax: (03) 5995 7505 Mob: 0414 469 203

ABN 37 856 874 788

Email: [robiltlapidary@gmail.com](mailto:robiltlapidary@gmail.com)

**Manufacturers of Lapidary Machines for over 45 years**

**Tumblers – Trimsaws – Slabsaws – Grinders - Polishers**

**Vibro Laps – Flat Laps – Faceting & Combination Machines**

**Suppliers of Grits – Laps – Wheels – Blades – Dops – Discs.**

**Service – Repairs – Spare Parts - Rough – Cut – Polished Stones**



## FACETING JUDGES COURSE

Paul Sabolta will be conducting a Faceting Judges course on 30 –31 August 2023 at Narrabri. It will be held prior to the AFG Muster which is on 2-3 September 2023.

This is a great chance for anyone who wishes to become a faceting judge. It is very rewarding pastime and the benefits are many. It also means that you will be giving back to your hobby in very important manner.

Please consider and ring Paul on 0415 211 478 or email him on [atlobas53@yahoo.com.au](mailto:atlobas53@yahoo.com.au)

### **australian lapidary supplies**

For 50 years we have been manufacturing and supplying quality base metal Findings and Mountings to Lapidary and Craft enthusiasts.

Shop online for a large range of:

Findings

Chains – Neck chains and Bulk chain

Mountings: Rings, Pendants, Brooches, Bracelets etc.

Snap –Tite™ Settings – Sterling Silver and Gold Filled

Discounted and close-out Specials

[www.australianlapidarysupplies.com.au](http://www.australianlapidarysupplies.com.au)

Phone: 02 95318922 Email: [sales@australianlapidarysupplies.com.au](mailto:sales@australianlapidarysupplies.com.au)

**Discount for Lapidary Clubs and Members**

Simply order online and type in coupon code: **lapidary** at checkout.

# Gemcuts

\*Lapidary \* Fossicking  
\* Jewellery Making Tools



Cabbing



Tumbling



Jewellery Tools



Carving



Sawing



Ultrasonic Cleaners

We stock an extensive range of our own diamond tools, faceting accessories, rough and products.

We are Authorised dealers for:

**Diamond Pacific Tool Corp** – Nova, Genie, Bigfoot, Galaxy

**Barranca** - MK Diamond Saw Blades

**Lortone** - Cabbing Machines, Saws, Rotary Tumblers

**Saeshin** - "Strong" Micro Motors

**Cratex** - Rubberised Abrasives

**Crystalite** - Diamond Laps, Crystal Pads, Poly Pads, Flexo Pads

**Klingspor** - Industrial Grade Sanding Sheets, Belts & Disks

**GemPro** - Flex Wheels, Resin Bonded Diamond Products

**Jersey Instruments** – Faceting Machines

36A Smith Drive  
Ballina NSW 2478  
Ph. 02 66811686  
A/H 0427 012 014  
Brian & Liz

MAIL  
PHONE &  
INTERNET  
ORDERS

[www.gemcuts.com.au](http://www.gemcuts.com.au)

**State Gem and Mineral Show (GEMKHANA)**

Below is the flyer for the State Gem and Mineral Show, 2023.

It will be held at the Hawkesbury District Agricultural Show Grounds, 40 Racecourse Rd, Clarendon on 23<sup>rd</sup> and 24<sup>th</sup> of September 2023.

You may have noticed that the show has had a name change to State Gem and Mineral Show. The competition however, will still be the GEMKHANA Competition, Level 3.

If you are entering the GEMKHANA competition (which everyone is encouraged to do) postal entries are due on the 18th of August. Hand delivered entries are due on the 23<sup>rd</sup> August by 1pm. More information can be found at the following link:

<https://gemlapidarycouncilnsw.org.au/gemkhana/>.

## 2023 State **GEM** and Mineral Show



Formerly known as the GEMKHANA Run by the Gem and Lapidary Council of NSW

**9am - 5pm Saturday 23<sup>rd</sup> & Sunday 24<sup>th</sup> September**

### **Featuring**



- Hand crafted Jewellery.
- Faceted Stones.
- Polished Stones.(Cabochons)
- Stone Carving.
- Minerals & Fossils.



**Free Parking and ATM on Site.**

*Camping is also available on site.*

Hawkesbury District Agricultural Show Grounds

40 Racecourse Rd, Clarendon.

Traders will be offering:- Jewellery, Crystals, Minerals, Cut

Stones, Lapidary Equipment, Faceting Rough and Slabs.

Gem Cutting Demonstrations.

**Adults \$10 Children under 16 Free**

Contact Bob McLean [gemkhana@gemlapidarycouncilnsw.org.au](mailto:gemkhana@gemlapidarycouncilnsw.org.au)

<https://www.facebook.com/GemLapidaryCouncilNSW/>

**EVENTS**

**General information on which events are going ahead and which have been cancelled, can be found on the following link:**

<https://gemlapidarycouncilnsw.org.au/events/>

- ◇ **8—9 July** —Campbelltown & District Lapidary Club—Annual Gem & Mineral Exhibition, Greg Percival Community Centre, Ingleburn
- ◇ **16 July**—Christmas in July “Open Day” - Illawarra Lapidary Club Inc, 51 Meadow Street, Tarrawanna
- ◇ **22 July** —Central Coast Lapidary Club –Annual Rock Auction- at the Clubrooms, 10 Ourimbah Creek Road, Ourimbah
- ◇ **23 –24 September** —**State Gem and Mineral Show** / GEMKHANA, Hawkesbury Showground, Clarendon
- ◇ **19—20 August** — Blaxland Gem & Mineral Club Annual Gem Show. Glenbrook Cinema Hall, Ross St, Glenbrook
- ◇ **13—20th October** -Open House—Inverell and District Lapidary Club, Inverell Lapidary Centre, McIlveen St, Inverell
- ◇ **14 –15 October** —Central Coast Lapidary, Crystal, Gem and Jewellery Colour Show—Mingara Events Centre Wyong Road Tumby Umbi
- ◇ 24 March-1 April 2024 GEMBOREE Willungs SA, booklet may be downloaded from AFLACA website <https://aflaca.org.au/gemboree/>