

# **Gem & Lapidary News**

## **November**

### **2021**

Print Post Approved PP243352/00002  
ISSN 2208-5556

Vol 47

No. 10

**Gem & Lapidary News** is the official publication of the Gem and Lapidary Council of NSW Inc, PO Box 188 Orange 2800. The executive and workforce of the Council are entirely composed of delegates from member Clubs. Council is NOT an autonomous body. The Gem & Lapidary Council is a member of AFLACA (Australian Federation of Lapidary and Allied Crafts Association). **Life Councillors:** Joan Ball (dec), Ron Beattie, Arthur Roffey (dec), Frank Hall (dec), Dot Caladine (dec), Maurya Hutton (dec), Marie Jenkins (dec), Dick Moppett (dec) & Bob Wright (dec).

### EXECUTIVE

President	Barbara Try O.A.M. (Northern Districts) 0417 676435
Senior Vice President	Colin Wright (AFG)
Vice president	Tony Try (Central Coast)
Secretary	Kathy Selwood (Orange) 6362 7917 secretary@gemlapidarycouncilnsw.org.au
Minutes Secretary	Mick Lane (Blue Mountains)
Treasurer	Bob McLean (Port Hacking)
Assistant Treasurer	Tony Offord (Port Hacking)
Committee:	Sue O'Neil (Goulburn) Joan Zealey (Illawarra) Marcia Hill (Western Suburbs)

### APPOINTMENTS

Public Officer	John Behrens
Auditor	Colin Russell
Editor	Vacant editor@gemlapidarycouncilnsw.org.au
Webmaster	Alex Maitland (Temporary Webmaster) webmaster@gemlapidarycouncilnsw.org.au
Equipment Officer	John Behrens
G&L News Mailman	Sue O'Neil
Education Officer	Vacant
GEMBOREE Coordinator	2022—Tony Offord
GEMKHANA Coordinator	Bob McLean with Tony Offord
AFLACA delegates	Barbara Try (voting) and Tony Try (non-voting)
AFLACA J&R delegates	Barbara Try (voting) and Colin Wright (non-voting)

### COUNCIL MEETINGS

**Visitors welcome to attend**

EXECUTIVE meet monthly, fourth Wednesday of the month, 1pm, at Clubrooms, Parramatta-Holroyd Lapidary Club, 73 Fullager Rd, Wentworthville, NSW

**NEXT COUNCIL MEETING: November 24—2021 at 1pm**

## EDITOR'S NOTES

Hi everyone, **STILL** looking for an editor for this newsletter. It is not an arduous task so if you can help it would be wonderful.

Please contact Barbara Try on 0417676435.

---

## ADDRESSES

**for the Gem & Lapidary Council NSW**

**Website :** [http://gemlapidarycouncilnsw.org.au /](http://gemlapidarycouncilnsw.org.au/)

The website has links to the **secretary, editor & webmaster**

**Online edition of the newsletter is in colour.**

**Post :** Gem & Lapidary Council NSW, PO Box 188, Orange NSW, 2800

**Meeting rooms:** Parramatta-Holroyd Lapidary Club,  
73 Fullagar Rd, Wentworthville, NSW

---

## DEADLINES:

Third Wednesday of the month—a few days grace is allowed.

CONTACT THE G&L EDITOR TO INCLUDE YOUR CLUB'S NEWS

**[editor@gemlapidarycouncilnsw.org.au](mailto:editor@gemlapidarycouncilnsw.org.au)**

---

## ADVERTISING RATES

**per G&L News edition**

(NB: printed in black & white)

Full page - \$40    1/2 page - \$25    1/3 page - \$20

Please send payment with advertising booking and copy

---

### Disclaimer:

Opinions expressed are those of the original authors and do not necessarily reflect those of the Editor, Gem & Lapidary Council, or its members. Persons acting on any opinion, advice, fact or advertisement published in this issue does so at their own risk.

<b>Contents</b>	<b>Page(s)</b>
G & L Council Information	2
Editor's Notes and Council contact information.	3
Message from the President	4
Committee Meeting Minutes	5, 6,
GEMBOREE 2022 Information	7 & 9
Mineral Oddities	8 & 10
Article called "Times Change" by RR	11,12
'T' is for Topaz by Tony Try	13
Club News	14
Events	16



### **Message from the President**

Well things are slowly getting back to what is the new normal with Covid and Health rules. With the GEMKHANA competition all finished and published we are now moving full steam ahead with the Mudgee GEMBOREE 2022 arrangements.

The Cabochon Judging Course took place on 16 & 17 October with three candidates and one judge doing a refresher all from Greater Sydney. Two other candidates from regional NSW could not attend due to Covid restrictions. Another date has been set for them and all going well will take place on 6 & 7 November 2021.

The new judges are Cathy Fisher, Bob McLean from Port Hacking Lapidary Club and Martin Stoeckl from Parramatta/Holroyd Lapidary Club.

Stay safe and stay well.

Barbara Try, President

**Minutes of the COMMITTEE MEETING of 27 October 2021**

Via Zoom Meeting

**The meeting** was opened at 1:00pm by President Barbara Try (Northern Districts) who welcomed delegates from the following clubs: Central Coast (Tony Try), Orange (Kathy Selwood) Port Hacking (Bob McLean), Western Suburbs (Marcia Hill), Illawarra (Joan Zealey), AFG (Col Wright). Western Suburbs (Ainslie Flynn), Port Hacking (Tony Offord),

**Apologies:** Blaxland (Pam & Alec Gardiner), Blue Mountains (Mick Lane & Kim Cooke), Goulburn (Sue & Joe O'Neil), Parramatta/Holroyd (John Behrens), Hawsbury (Peter Beckwith)

**Moved:** Central Coast, **Seconded:** Western Suburbs that apologies be accepted.

**Minutes of the Previous Meeting: 22 September 2021**

Moved AFG, *seconded*, Port Hacking that the minutes be accepted.

**Business Arising:**

1/ Trailer break away braking system Barb to give John a ring

**Moved** Port Hacking **seconded:** Illawarra that Business arising from minutes be approved.

**Correspondence:** See attached list.

**Business Arising from Correspondence:**

1/ Webster's public liability certificate received

2/ Event assistance grant sent in 1-10-2021

3/ Webster's trailer contents insurance \$40,000

**Moved** Orange **seconded** Western Suburbs, that Inward Correspondence be received, Outward Correspondence be endorsed and business arising be approved.

**Treasurer's Report:**

General a/c: Inc \$00.00 Exp \$286.65 Bal at 27/10/2021 \$993.82

GEMKHANA a/c: Inc \$00.00 Exp \$239.20 Bal at 27/10/2021 \$3,292.73

GEMBOREE a/c: Inc \$896.00 Exp \$500.00 Bal at 27/10/2021 \$6,948.27

**Accounts for payment:**

Tony Offord deposit to AREC

**Moved** Port Hacking **seconded**, Central Coast that the report be accepted.

**J&R Report:**

- 1/ judging course for cabs, 3 new finished, 4 more to go.
- 2/ judges badgers quote for 30, new design \$9.00 each approved.
- 3/ Judge's list updated
- 4/ Jewellery, mineral and faceting judges needed

**Webmaster:** No report.

**G&L NEWS Editor:** Still need an Editor

**Education Report:** Waiting till 2022 when COVID restrictions are finished

**Social Media:** No report, but good feedback on Facebook

**Mail Person:** No report.

**GEMKHANA**

- 1/ Booked & confirmed dates in for next year and approx. 12 traders already booked. Done

**GENERAL BUSINESS:**

- 1/ Reports needed by end of November please for AGM – 8 December

- 2/ Health rules regarding covid

**Meeting closed:** 1.35pm

**SECONDED Half of Zoom meeting.** --The meeting was reopened at 1:45pm by President Barbara Try (Northern Districts).

**GEMBOREE: Mudgee 2022.**

Event insurance to be arranged 2021 - Col

GEMBOREE trophy's slowly being put together

Budget for Multi Media Publicity & other standard Publicity for Kim budget \$500, radius state wide? & 4 family passes to be given away.

Working Bee on contents of the trailer to get ready Mudgee, can use Parramatta possible late Nov.

Partition across hall \$1,644.00 for 16 panels to cover the 36 metres – passed NSW clubs & tourist centres to receive Flyers & posters soon.

Club volunteers – their club has free outside trader's space

Reports to be accepted moved: Central Coast Seconded: Orange

**Meeting closed:** 2.20pm

**Next meeting:** 24 November

**Meeting dates for 2020:** 8 December & AGM

**58th GEMBOREE 2022**

***At Mudgee's Australian Rural Education Centre, 267  
Ulan Road, Bombira***

***Easter 15th to 18th April 2022***

**COMPETITION ENTRIES ARE DUE 5TH**

**FEBRUARY 2022**

Just a reminder that the closing date for your entries is fast approaching. This means from the 1st of November you have 13 weeks left to finish your prize winning entries. It is also very important that you read the schedule and the Competitor & Judging Manual to ensure you are aware of what is required for you to enter. A copy of the schedule is on the AFLACA—GEMBOREE page on the website.

(<https://aflaca.org.au/gemboree/>)

For any questions please do not hesitate to contact me via email  
[twotrys@bigpond.net.au](mailto:twotrys@bigpond.net.au) or by phone 0417676435

Barbara Try, Competition Chairperson

## **Robilt Lapidary Supplies**

**167 Endeavour Drive, North Cranbourne 3977**

**P.O. Box 179 Doveton, Victoria 3177**

**Ph: (03) 5996 0750 Fax: (03) 5995 7505 Mob: 0414 469 203**

**ABN 37 856 874 788**

**Email: [robilt@unite.com.au](mailto:robilt@unite.com.au)**

**Manufacturers of Lapidary Machines for over 45 years**

**Tumblers – Trimsaws – Slabsaws – Grinders - Polishers**

**Vibro Laps – Flat Laps – Faceting & Combination Machines**

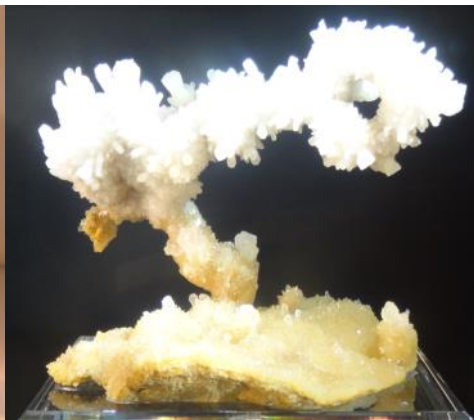
**Suppliers of Grits – Laps – Wheels – Blades – Dops – Discs.**

**Service – Repairs – Spare Parts - Rough – Cut – Polished Stones**

## Mineral Oddities



**Rare Multi Coloured Nigerian  
Tourmaline**



**Calcite from China**

## **ais** **australian lapidary supplies**

For 50 years we have been manufacturing and supplying quality base metal Findings and Mountings to Lapidary and Craft enthusiasts.

Shop online for a large range of:

Findings

Chains – Neck chains and Bulk chain

Mountings: Rings, Pendants, Brooches, Bracelets etc.

Snap –Tite™ Settings – Sterling Silver and Gold Filled

Discounted and close-out Specials

**[www.australianlapidarysupplies.com.au](http://www.australianlapidarysupplies.com.au)**

**Phone: 02 95318922 Email: [sales@australianlapidarysupplies.com.au](mailto:sales@australianlapidarysupplies.com.au)**

**Discount for Lapidary Clubs and Members**

Simply order online and type in coupon code: **lapidary** at checkout.





# **GEMBOREE 2022**

incorporating the

## **58TH NATIONAL GEM & MINERAL SHOW**



*at Mudgee's Australian Rural Education Centre, 267 Ulan Road,  
Bombira, NSW*

**JEWELLERY, GEMS, CRYSTALS & MINERALS**



**Friday, Saturday, Sunday & Monday**

**15th – 18th April, 2022 (over the Easter Long Weekend)**

**Open 10am – 5pm Friday, 9am – 5pm Saturday & Sunday, 9am – 1pm Monday**

Adults \$10, Concession & Students \$5 (must have cards) Child U/16 free, Child over 16 \$10.

**Free Parking available - ATM's on Site**

Onsite Camping.

Fossicking Trips, Excursions for non-lapidary partners. Great Food Outlets. Age of Fishes Display. 100's of Lapidary Displays, Crystals Minerals, Gemstones, Fossils and Jewellery.

Metaphysical Crystals, jewellery supplies and equipment.

**At Least 30 Dealers**  
**Plus large numbers of tailgaters**

Contact : Co-Ordinator - Tony Offord M 0404269953 Email: [tonyofford@optushome.com.au](mailto:tonyofford@optushome.com.au)

Facebook Contact: <https://www.facebook.com/GemLapidaryCouncilNSW/>

Publicity Manager – Alan McRae ph 02 6331 5404: [amcrae@lisp.com.au](mailto:amcrae@lisp.com.au)

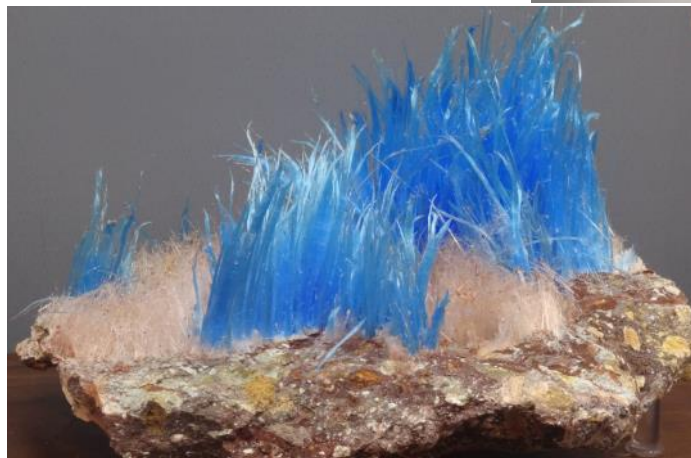
## Mineral Oddities



Calcite



Amethyst on Calcite



Chalcantithite

**TIMES CHANGE**

[Not always for the better !!]

Covid has caused a lot of problems. While many of these are real, it is also unfortunately used as an excuse for people to get out of doing things.

However, because of Covid health restrictions many clubs have suffered financially, and it is understood that some of the smaller regional clubs may not be able to re-open. This is primarily because of money problems, and also because of the age of its members.

The “AGE” situation is causing other problems. It is predominantly the older members of the clubs who joined the lapidary clubs for social reasons such as friendships; camaraderie and escape from work and other everyday problems, as well as some self-esteem and pride when project is completed to the best of their ability. That is, something they are proud of and want to show others.

This is why the majority of them entered competitions. Sure, it was a feather in their cap if they won a prize, but it was also being proud of their skills and promoting their club’s reputation as being somewhere a person could be taught well in a friendly environment.

The teachers and judges from these clubs are not paid. They do it to return something to a place that has been “good” to them, and get pleasure from seeing their pupils shine and do well in competitions.

Unfortunately, many of those old stalwarts are reaching an age where they can no longer contribute in the way they used to do. Even more unfortunate is the fact that very few of the new and younger members are prepared to step up and take over these roles.

This is because I believe that they join the clubs with the perception that they will make a fortune by cutting gemstones and making jewellery. They are there for what they can get out of it. While this is OK there should also be an element of how they can contribute to the sustainability of their club, and the continuance of the skills being taught.

GEMKHANAS and GEMBOREES are held primarily for the various types of competitions, which are displayed for all to see. These competitions involve a lot of unpaid work, carried out behind the scenes by judges and committees.

BUT, the number of people competing in competitions is getting less. More people are required to put something back into the lapidary world by competing and putting their hand to be a judge.

GEMBOREE 2022 at Mudgee is less than six months away !!

It would be great if all club members could make the effort to enter at least one piece of their work, as this is the first National Show/competition to be held since the end of Covid restrictions and looks like being a very big event. So, why not be part of it and help get the lapidary movement back out of the doldrums.

RR



### **JUDGES NEEDED**

We need people to step up and do some judging training, particularly in Minerals, Faceting and Jewellery.

We have been fortunate to have a number of people willing to learn to be Cabochon judges but there are gaps in our numbers for the other crafts.

It would be wonderful if we can find people who are able to help in any way.

Please contact Barbara Try on 0417676435 if you wish to help.

**“T” is for Topaz**

**Topaz** is a silicate mineral of aluminum and fluorine. **Topaz** crystallizes in the orthorhombic system, and its crystals are mostly prismatic terminated by pyramidal and other faces. It is one of the hardest naturally occurring minerals (Mohs hardness of 8) and is the hardest of any silicate mineral. This hardness combined with its usual transparency and variety of colours means that it has acquired wide use in jewellery as a cut gemstone as well as for intaglios and other gemstone carvings.

**Topaz** in its natural state is a golden brown to yellow – a characteristic which means it is sometimes confused with citrine, a less valuable gemstone. A variety of impurities and treatments may make **Topaz** wine red, pale grey, reddish-orange, pale green, or pink (rare), and opaque to translucent/transparent. The pink and red varieties come from chromium replacing aluminium in its crystal-line structure.

Orange topaz, also known as precious topaz, is the conventional birthstone for November, the symbol of friendship, and the state gemstone of the U.S. state of Utah.

**Imperial Topaz** is yellow, red, pink (rare, if natural) or pink-orange. Brazilian **Imperial Topaz** can often have a bright yellow to deep golden brown hue, sometimes even violet. Many brown or pale **Topazes** are treated to make them bright yellow, gold, pink, or violet coloured. Some **Imperial Topaz** stones can fade on exposure to sunlight for an extended period of time.

**Blue Topaz** is the state gemstone of the US state of Texas. Naturally occurring **Blue Topaz** is quite rare. Typically, colourless, grey, or pale yellow and blue material is heat treated and irradiated to produce a more desired darker blue. Brazil is one of the largest producers of **Topaz**, with some clear **Topaz** crystals from Brazilian pegmatites reaching boulder size and weigh hundreds of pounds .

**Blue Topaz** is a kind of **Topaz** that is one of the most liked and most valuable.

**Gem Quality Topaz** is found in Victoria, Tasmania, Queensland, New South Wales and Western **Australia**. The most popular Gemfields in **Australia** for fossicking are Mt Surprise Queensland, Beechworth Victoria, New England area New South Wales and Killiecrankie Flinders Island off Tasmania. The finest gem material is said to come from Oban in New South Wales, Mt Surprise in Queensland and Flinders Island in Tasmania.

I have been on a club field trip when some very nice natural deep **blue Topaz** crystals were found at Mt Surprise – unfortunately NOT by me !!.

Tony Try

[Information taken from a variety of sources]

## CLUB NEWS

**Email: [editor@gemlapidarycouncilnsw.org.au](mailto:editor@gemlapidarycouncilnsw.org.au)**

*Finally some of our Clubs are back, but under strict Covid-19 rules.*

- Illawarra Lapidary Club are hoping to have a Committee meeting shortly—they have members who are in Greater Sydney and members in Kiama and until the restrictions lift they cannot meet.
- Port Hacking Lapidary Club is up and running again.
- Western Suburbs Lapidary Club have been back since 11th October 2021
- Northern Districts Lapidary Club reopened their doors on 18th October 2021.
- Central Coast Lapidary Club have held their first meeting on 14 October since May this year. They also had a working bee on Wednesday 27 October to do inside and outside cleaning with the view to open the club on Tuesday 2 November 2021.
- Parramatta/Holroyd Lapidary Club opened on 18 October 2021
- Bankstown Lapidary Club is still waiting for the council to give them the go ahead before they can open.
- Canberra Lapidary Club were hoping to open on Saturday 16 October; but unfortunately their Spring Show will not take place.
- Goulburn, Orange and a few of our regional Clubs have been open most of the time during the Covid –19 outbreak.
- Lismore Gem Lapidary Club are open once more—hopefully for a long time. They are also looking to get interested members to go to the Mudgee GEMBOREE. Lismore has also been motivated to do improvements on their Lockup.

# Gemcuts

\*Lapidary \* Fossicking  
\* Jewellery Making Tools



Cabbing



Tumbling



Jewellery Tools



Carving



Sawing



Ultrasonic Cleaners

We stock an extensive range of our own diamond tools, faceting accessories, rough and products.

We are Authorised dealers for:

**Diamond Pacific Tool Corp** – Nova, Genie, Bigfoot, Galaxy  
**Barranca** - MK Diamond Saw Blades

**Lortone** - Cabbing Machines, Saws, Rotary Tumblers

**Saeshin** - "Strong" Micro Motors

**Cratex** - Rubberised Abrasives

**Crystalite** - Diamond Laps, Crystal Pads, Poly Pads, Flexo Pads

**Klingspor** - Industrial Grade Sanding Sheets, Belts & Disks

**GemPro** - Flex Wheels, Resin Bonded Diamond Products

**Jersey Instruments** – Faceting Machines

36A Smith Drive  
Ballina NSW 2478  
Ph. 02 66811686  
A/H 0427 012 014  
Brian & Liz

MAIL  
PHONE &  
INTERNET  
ORDERS

[www.gemcuts.com.au](http://www.gemcuts.com.au)



## EVENTS

**General information on which events are going ahead and which have been cancelled, can be found on the following link:**

<https://gemlapidarycouncilnsw.org.au/events/>

***PLEASE CHECK WITH VENUE // CLUB  
BEFORE GOING. AS SHOWS MAY BE  
CANCELLED DUE TO COVID-19***

- ◇ **13th & 14th November** Newcastle Gem & Jewellery Fair. PCYC Newcastle
- ◇ **13th & 14th November** Hornsby Crystal, Mineral, Fossil & Craft Festival, Hornsby Memorial Hall
- ◇ **27th & 28th November** Carlingford Gem & Mineral Expo. Roselea Community Centre.
- ◇ **15th—18th April 2022—GEMBOREE 2022**, Venue: AREC at Mudgee.
- ◇ **15 & 16 May 2022—30th Lismore GEMFEST**  
Lismore Showground