

# **Gem & Lapidary News**

December 2017

Vol. 43 No 12

**Gem & Lapidary News** is the official publication of the GEM AND LAPIDARY COUNCIL of NEW SOUTH WALES Inc, PO Box 163, Wentworthville, NSW, 2145. The executive and workforce of the Council are entirely composed of delegates from member Clubs. Council is NOT an autonomous body. The Gem & Lapidary Council is a member of AFLACA (Australian Federation of Lapidary and Allied Crafts Association).

Life Councillors: Joan Ball, Ron Beattie, Arthur Roffey, Frank Hall (dec), Dot Caladine (dec), Maurya Hutton (dec), Marie Jenkins (dec), Dick Moppett (dec) & Bob Wright (dec).

## EXECUTIVE

President	Barbara Try (Northern Districts) 0417 676435
Vice Presidents:	Colin Wright (Port Hacking) Tony Try (Central Coast)
Secretary	Marilyn Behrens (Parramatta-Holroyd) 02 96358218 secretary@gemlapidarycouncilnsw.org.au
Minute Secretary	Mick Lane (Blue Mountains)
Treasurer	John Behrens (Parramatta-Holroyd) 02 96358218
Committee:	Wally Dove (Port Hacking) Sue O'Neil (Goulburn) Joe O'Neil (Goulburn)

## Appointments

Public Officer	John Vincent (Hawkesbury Valley)
Auditor	Christine Gruntar
Editor	Theresa Mason (BA hons, ADA) editor@gemlapidarycouncilnsw.org.au
Webmaster	Lilly Murphy (NSW) webmaster@gemlapidarycouncilnsw.org.au
Property-Equipment Officer	John Behrens
Competition Judges	Wally Dove & John Behrens
Education Officer	vacant
GEMBOREE Coordinator	Col Wright
GEMKHANA Coordinator	Bob and Reg McLean

**Website:** <http://www.gemlapidarycouncilnsw.org.au/>



## COUNCIL MEETINGS

EXECUTIVE - Meet monthly, fourth Wednesday of the month, 1pm, at Clubrooms, Parramatta-Holroyd Lapidary Club, 73 Fullager Rd, Wentworthville NSW

**Visitors welcome to attend:)**

## SUBSCRIPTIONS to the *Gem & Lapidary News*

\$20 if posted bulk to your Club

\$25 if posted to members' private address

\$30 for non-members of the G&L Council

**FREE** online subscriptions (see website for details) **NB:** colour version available online!

## ADVERTISING RATES per *G&L News* edition (NB: printed in black & white)

Full page - \$40 per issue

1/2 page - \$25

1/3 page - \$20

Please send payment with advertising booking and copy

# CONTENTS

G&L Council Information	page 5
Journey to GEMKHANA Competitions	page 6
Club News	page 7
Editor's Award: On Cutting	page 9
GEMBOREE® 2018	page 11
New South Wales GEMKHANA®	page 12
Exhibitions & Events	page 15

---

Gem & Lapidary Council NSW's website is [gemlapidarycouncilnsw.org.au](http://gemlapidarycouncilnsw.org.au) with links to the **secretary, editor & webmaster**

AFLACA's website is: [www.aflaca.org.au](http://www.aflaca.org.au)

---

## **NB: CHANGE OF POSTAL ADDRESS FOR THE G&LC NSW**

Gem & Lapidary Council NSW, PO Box 163, Wentworthville NSW, 2145

---

## **NEXT COUNCIL MEETING**

Wednesday 13th December at the Clubrooms, Parramatta-Holroyd Lapidary Club, 73 Fullagar Rd, Wentworthville, 12 noon

Please attend - you will be made very welcome ♥

---

## **NB: THERE IS NO JANUARY *G&L NEWS* EDITION DEADLINE FOR FEBRUARY 2018 ISSUE**

January 17th (third Wednesday of the month, plus a few days grace)

**CONTACT THE G&L EDITOR TO INCLUDE YOUR CLUB'S NEWS**

**[editor@gemlapidarycouncilnsw.org.au](mailto:editor@gemlapidarycouncilnsw.org.au)**

---

### Disclaimer:

Opinions expressed are those of the original authors and do not necessarily reflect those of the Editor, Gem & Lapidary Council, or its members. Persons acting on any opinion, advice, fact or advertisement published in this issue does so at their own risk.

# A&E METALS

ORDER ONLINE TODAY AT  
**[aemetal.com.au](http://aemetal.com.au)**



The A&E Metals branded range of silver and industrial related precious metal products is the only Australian mass produced range of silver based fabricated metal products. A&E Metals is also the exclusive Australian distributor of **Argentium®**.

**A&E  
METALS**  
A PALLION COMPANY

**A&E METALS HEAD OFFICE**

68 Smith Street Marrickville NSW 2204 Australia  
P: +61 2 8568 4200 | F: +61 2 8568 4240 | E: [info@aemetal.com.au](mailto:info@aemetal.com.au)

**AUSTRALIA WIDE  
1300 360 598**

[aemetal.com.au](http://aemetal.com.au)



# G&L COUNCIL INFORMATION



## Minutes of the COMMITTEE MEETING of 22nd November 2017 held at the Parramatta-Holroyd Clubrooms.

The meeting was opened at 1pm by President Barbara Try (Northern Districts) who welcomed delegates from the following Clubs: Goulburn (Sue & Joe O'Neil), Mineralogical Society (Minsoc) (John Behrens), Central Coast (Tony Try), AFG (Col Wright), Hawkesbury Valley (John Vincent), Parramatta-Holroyd (John & Marilyn Behrens), Blaxland (Pam & Alex Gardiner & Robert Neale), Blue Mountains (Mick Lane & Kim Cook) and Life Councillor (Arthur Roffey OAM), NSW (Lilly Murphy), Orange (Kathy Selwood).

**Apologies:** Blue Mountains (Una King), Port Hacking (Wally Dove & Bob Mclean), Western Suburbs (Shirley & Ainslie Flynn & Marcia Hill)

**J&R Report:** Minor Changes to Competition Manual to be discussed and submitted.

**G&L News Report:** ISSN2208-5556 to be used on future copies of the *G&L News* when using e-deposit at the National Library. The Editor's annual report was received.

**Webmaster's Report:** Discussion re advertising on the website concluded requests would be dealt on a case by case basis at committee meetings.

**Education Report:** Nil

**GEMKHANA Report:** • Lilly Murphy of The Lapidary Club of NSW was at last presented with the Editor's Award for the best article published in a Club newsletter-magazine this year [NB: reprinted on p9 this issue – Ed.] • Cost to hire Goulburn basketball stadium is \$3079.00, with powered camp sites \$30.00 per night, and unpowered sites \$17.00 per night. Cost of table and chair hire to be determined. • Outdoor trader contract to be posted on website. • Indoor Trader contracts to be available on request. • Further discussion on the venue for 2018 held over to December meeting.

**GEMBOREE Report:** Clubs are asked to advise how many GEMBOREE books they require for Rockhampton 2019.

**General Business:** • The purchase of polo neck shirts was approved. Mick Lane to follow up on colours available. • A few updates are to be made to the Constitution. Marilyn to write up suggested changes to be voted on in the



new year – for presentation to the next meeting.

Meeting closed at 2.50pm

**Next meeting:** Wednesday 13th December 2017

**Please note December 2017 meeting starts at 12-noon, for a Committee meeting, then the AGM. Please bring a plate of festive nibbles:)**

## JOURNEY TO GEMKHANA COMPETITIONS

by Lizzy Weatherburn

My journey started when I joined Lismore Gem and Lapidary Club a few years ago. I was introduced to a wonderful man, the late Bob Maher, who became my teacher and mentor.

My in-laws, John and Gina Weatherburn, were very involved in the Northern Districts Club in Sydney. They were doing very well in competitions so I thought I would give it a go.

I spoke to Bob and he agreed. So in 2015 I entered my stones into my first competition GEMKHANA. I was successful winning 1st place in Intermediate freeform section (Intermediate as I had too many stones in Novice section so I chose my Smoky Quartz freeform facet to go up a level). The other stone, my Endeavour Wave Brazilian Agate, won me a Highly Commended.

I was so excited, so was Bob when I told him. After this he encouraged me to do more.

I did not enter the following year due to an injury. After I went back to club I knew I needed to enter my stones in GEMKHANA again. So in 2017 I

entered several. Success again with 1st place in freeform with Wave stone Agate in Open section and Special award for Fancy Cabochon in Novice Section.

By entering competitions such as this I find the feedback of the judges highly valuable as this gives me a way to improve my skills in Gem and Lapidary. It's a wonderful feeling. And I feel very proud to represent Lismore Gem and Lapidary Club. I would like to see more members at Lismore enter. There is a lot of talent here.



## **CLUB NEWS** Email: [editor@gemlapidarycouncilnsw.org.au](mailto:editor@gemlapidarycouncilnsw.org.au)

**Campbelltown Lapidary Club** report a successful Open Day, and issue thanks to all members for their help and support. The Club's Christmas BBQ lunch is on this month, along with a Christmas raffle.



**Canberra Lapidary Club** released their Bushfire Survival Plan 2018, which includes vegetation management, equipment maintenance and checks, emergency kit, Club closure issues and notifications etc. If, in the unlikely event of being unable to leave the Clubhouse, members are advised to 'Use the hoses and fire extinguishers as needed. Listen to the battery radio at the Club for announcements and lastly take shelter in the toilet area of the Club until help arrives or it is safe to vacate the premises.' The Club invites entries from Club members and other interested parties for the 2018 Royal Canberra Show Crafts Expo (Lapidary & Allied Crafts), organised & sponsored by the Canberra Lapidary Club, which runs from 23-25th February.

**Casino Lapidary Club** recently celebrated the 100th birthday of Club member Eric Watson, who is now into his second century. Through his working career, Eric started and operated Watson & Sons marine panel and trimming shops in Lismore, and on retirement enjoyed many years in Evans Head with his wife

### **Robilt Lapidary Supplies**

**167 Endeavour Drive, North Cranbourne 3977**

**P.O. Box 179 Doveton, Victoria 3177**

Ph: (03) 5996 0750 Fax: (03) 5995 7505 Mob: 0414 469 203

ABN 37 856 874 788

Email: [robilt@unite.com.au](mailto:robilt@unite.com.au)

**Manufacturers of Lapidary Machines for over 45 years**

**Tumblers – Trimsaws – Slabsaws – Grinders - Polishers**

**Vibro Laps – Flat Laps – Faceting & Combination Machines**

**Suppliers of Grits – Laps – Wheels – Blades – Dops – Discs.**

**Service – Repairs – Spare Parts - Rough – Cut – Polished Stones**

**Servicing Your Lapidary Needs**



(now deceased). The last Club field trip was to Hogarth Range fossicking for labradorite and Eric joined in and did a little fossicking himself.

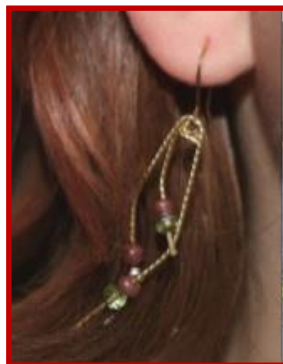
**Illawarra Lapidary Club** had their annual exhibition last month, with their Christmas party coming up this month. The Club's mineral meeting was well attended, with a report given on an old collection of finds from a Parramatta quarry that are now on display at the Australian Museum. Last month's social night featured a quiz on 'how well do you know your club?', with January's meeting being 'skite night'.



**Casino Lapidary Club members fossicking for labradorite at Hogarth Range with 270 years of combined wisdom: Centenarian, Eric Watson in foreground, with Bob Wallace, 81, & Bob Phillips, 89**

**Inverell & District Lapidary Club** report heavy rainfall forced the relocation of their annual Gem & Craft Show to the Clubhouse, testing members' ingenuity. Although takings were down, it proved a successful event, with potential to host future shows there. The Club's 'barbeque brigade' are busy fundraising.

**Lismore Lapidary Club** report a revamp of the Club's information brochure. Repairs are being made to the casting wax injector, and a new cistern has been installed. The recent field trips have been well-attended, with some good finds from the New England trip including nice colours of sapphire, along with topaz, zircons and smoky quartz. The junior Rockhounds used skills of accurate measurement, following written instructions, hammering and twisting wire, and designing their own jewellery, including making curved 'rain' earrings. The Club's displays and sales area attracted a lot of attention at the recent Lismore Show, and the Club Christmas Party is planned for this month.



**Lismore Club Junior Rockhounds made and designed their own jewellery, including these curved rain earrings**

The **Northern Districts Lapidary Club** were awarded the Frank Hall Memorial Trophy as the Most Successful Club (highest point score) at the NSW GEMKHANA competition. A first for the Club, the newsletter extended congratulations to all members who contributed to the win. Preparations are already underway for next year's exhibitions. The Club Christmas Party will





feature a visit by Santa to all the children, with hampers and the Club's Tombola prizes (recycled & re-gifted suitable items) to be won. Judging (by applause) for the Club's annual WOW Awards for unique outside-the-box lapidary items will take place. The Club's Nova cutting wheels are being damaged by misuse, and members are reminded to observe proper use of equipment and tools. The last 5-10 minutes of class are to be used to clean all machinery, surfaces, floors and sinks. Around the Clubhouse, the slabbing saw has been cleaned, LED lamps are being installed, and wax melting pots and sawblades are on order. Sadly, the Club reported the loss of two active Club members, Steve Stubbs, who enjoyed silver-work, and Lewis Calwell, who enjoyed carving and ring-making and did the Club's gold-plating. Their humour and cheerful presence will be missed.

**Parramatta-Holroyd Lapidary Club** are holding a wire-wrapping weekend workshop this month. The new grinder/polisher will require members to log its use so it is known when maintenance is required. The Club are preparing for a week-long fossicking trip to Tingha and Inverell in mid-January looking for quartz and sapphires, with plenty of time for socialising and swimming. Members are reminded that fossicking equipment can be borrowed from the Club (sign-out/in sheet). Issues with the Club website are being investigated. Members are reminded that the Mineral Group meets on the second Thursday of the month. Next year's Club exhibition will be in September. ♦

## EDITOR'S AWARD: ON CUTTING



by Lilly Murphy (Lapidary Club of New South Wales)

**(NB: Awarded Best Article in Club Newsletter or Magazine, published in *The Lapidary Club News* (June 2017), a quarterly publication by The Lapidary Club of NSW Inc. The article is innovative, educational, and practical. Lilly has highlighted a generational change toward more sustainable lapidary practices, demonstrating how lapidary is quietly shaped by those who love it ♥ - Ed.)**

Lubricant is an essential component in lapidary and most other mechanical cutting and grinding processes. Generally speaking lubricants are liquids, most commonly consisting of long-chain carbon based molecules, ie oils. Water and wax are other familiar forms. In addition to the primary purpose of reducing friction and wear, lubricating oils are also required to carry out a range of functions, including cooling, corrosion prevention, transfer of power and removal of wear particles.

At LCNSW we have been considering what lubricant to use in the workroom trimsaw, a Lortone FS 8-C. This is a medium-sized saw with a coolant reservoir and 8 inch (25 cm)



blade. Its design results in quite a lot of coolant spraying out during use (which has ruined 2 of my woollen tops even though I wear an apron with a bib!). We thought about water in the interests of saving my wardrobe. However, while water is suitable for some cutting operations, water-soluble or water-based lubricants are likely to rust machinery and must be removed after use and the mechanisms dried. This is infeasible in the circumstances of a club. In addition, only oil is suitable for cutting hard stones, so pragmatically it is necessary to use only an oil lubricant in this saw. A third reason is that the FS 8-C Manual says that this trimsaw requires oil coolants.

The oils sold as mechanical lubricants are almost invariably "mineral oils" derived from petrochemicals. Your sewing machine and hair clipper oil are in this class, as well as the standard coolants for use in slabbing and trim saws. These oils represent a number of health risks, being probable carcinogens and known to cause dermatological conditions in users. They are also environmentally troublesome in regard both to production and disposal.

However, mineral oils are not the only option for lubrication. Vegetable and animal-based oils are safer for humans and have been demonstrated to be practical alternatives for machining. One company in Brazil, for instance, manufactures cutting and drilling oils and lubricants based on castor oil. Soy bean oil has entered the product range of a major industrial supplier based in Texas. Plant oils may even be superior to mineral oils in their machining properties, as shown in a number of published studies. They are advantageous also in being biodegradable, thereby reducing pollution and disposal concerns, and in deriving from renewable resources via agriculture. One drawback of animal and plant oils relates to that very quality of biodegradability: they are susceptible to microbial attack by bacteria and moulds.

The club started its healthier cutting practice with a trial of vegetable oil made from rice bran, which is cheap and readily available from grocery stores. Rice bran oil has a flash point of 254°C, which is among the highest of the edible oils. Not that we expect ever to approach this temperature in cutting. It is simply one point among several on which edible oils vary. Criteria for the choice are being human-friendly, environmentally friendly, and a low risk of going rancid or oxidising. This oil was chosen as its flash point suggests a high thermal stability or resistance to oxidation, leading we hope to a longer useful life. It has been in use in the Lortone saw for 4 months and has not undergone noticeable degradation or contamination.

(Reference sources: [cancer.org](http://cancer.org); [gemcutters.org](http://gemcutters.org); [https://en.wikipedia.org/wiki/Flash\\_point](https://en.wikipedia.org/wiki/Flash_point); [https://en.wikipedia.org/wiki/Smoke\\_point](https://en.wikipedia.org/wiki/Smoke_point); [steoil.com](http://steoil.com); Vaibhav Koushik A.V, Narendra Shetty. S & Ramprasad.C Vegetable Oil-Based Metal Working Fluids - A Review IJTARME 2012 1(1), 95-101 ([http://irdindia.in/journal\\_ijtarmer/pdf/vol1\\_iss1/17.pdf](http://irdindia.in/journal_ijtarmer/pdf/vol1_iss1/17.pdf))

# GEMBOREE 2018

The 54th National Gem & Mineral Show, **GEMBOREE 2018**, is being held over Easter from 30th March—April 2nd at Willunga in South Australia.

GEMBOREE is the national gem and mineral show run by the Australian Federation of Lapidary & Allied Crafts Associations Inc (AFLACA).

It is anticipated that the quality of the competition lapidaries will create a spectacular display for the 54th national GEMBOREE Gem & Mineral Show.

Competition entries are due on 15th January 2018, and judging will take place from mid-January. Challenge yourself!

According to the Committee, 'volunteers for setup and various other tasks throughout the weekend will still be needed as always, so volunteers will all be welcome.'

For more information on the upcoming GEMBOREE and information on entering in this **national competition of lapidaries and associated craft**, check the AFLACA website for the competition schedule: <http://aflaca.org.au/>

**NB: Entry forms, fees, and entries with return postage, must be received by 15 January 2018.**



**australian lapidary supplies**

For 50 years we have been manufacturing and supplying quality base metal Findings and Mountings to Lapidary and Craft enthusiasts.

Shop online for a large range of:

Findings

Chains – Neck chains and Bulk chain

Mountings: Rings, Pendants, Brooches, Bracelets etc.

Snap –Tite™ Settings – Sterling Silver and Gold Filled

Discounted and close-out Specials

[www.australianlapidarysupplies.com.au](http://www.australianlapidarysupplies.com.au)

**Phone: 02 95318922 Email: [sales@australianlapidarysupplies.com.au](mailto:sales@australianlapidarysupplies.com.au)**

**Discount for Lapidary Clubs and Members**

Simply order online and type in coupon code: **lapidary** at checkout.

# NEW SOUTH WALES GEMKHANA

by Tony Try

OCTOBER 2017

The NSW GEMKHANA was once again held in the showgrounds at Richmond, over the long weekend in October. The facilities there are good – plenty of room – power in the hall, and plenty of room and power for campers and Outside Traders. This year the latter were able to camp near their stalls, which meant they did not have to pack up each night.

As Barbara and I had only just returned from an overseas trip, and were both unwell, we were tossing up whether we should attend or not. But, go we did, which meant we helped make up the total of only nine people to do the work of setting up; doing all the other jobs during the GEMKHANA, and then dismantling everything at the end. It was very disappointing that many clubs did not have a single representative attend, let alone help.

The competition section attracted 182 entries [the same as last year]. Congratulations go to the Northern Districts Lapidary Club [NDLC], which was awarded the trophy for



**Northern Districts Lapidary Club members sporting their trophies won at GEMKHANA, including Champion Club (highest point score)**

being the most successful club, and also obtained the bulk of the other trophies. Although the NDLC has been Champion Club on a number of occasions at the National Level [GEMBOREE] this is the first time they have been Champion Club at the State level [GEMKHANA]. Congratulations to all the individuals concerned for putting in the effort. Arthur Roffey was awarded the trophy for having the best mineral in the show – his entries were outstanding. I was tempted

to make up a “disqualified” sign; lift the glass and place it under his entries just to stir him up, but Barbara would not let me!!



Overall the numbers [public] that attended the show were good. There were a lot more Tailgaters [now called Outside Traders] than there were last year and there were also a greater number of Dealers in the hall, than last year. “Dealers” are now referred



to as “Inside Traders” rather than “Dealers” because that term, to some, implies dealing in drugs.

While this is the third successive GEMKHANA to be held at this venue, the number of public through the gate on Saturday was up slightly on last year, while the number on Sunday was much the same. Monday morning was very quiet, as is traditional on the last day.

For the most part the weather was fine. Although it did not rain, the wind on Saturday was quite strong, which caused some anxious moments for the Outside Traders and their gazebos.

A friend of ours from Bendigo was passing by on his way home from touring around Queensland and stayed a couple of nights and helped us dismantle stalls etc and pack up tables. His help was greatly appreciated, but I get the impression that he will time his trip differently next time!!

On the Monday evening most of us decided to walk over to the local hotel for a meal together, which was very nice and relaxing.

After saying our goodbyes to everyone on Tuesday morning we headed up the Putty Road to meet Beth and Hylton [neighbours] at Narrabri. From there we were to travel

together to Rubyvale where we were to spend a few days making our fortune, digging for sapphires. The fortune bit did not eventuate, so I am still on a pension. ♦



GEMKHANA 2017 (pic by Brian Beauchamp)



Special Award for carving by Michael Burgess



# Gemcuts

\*Lapidary \* Fossicking  
\* Jewellery Making Tools



Cabbing



Tumbling



Jewellery Tools



Carving



Sawing



Ultrasonic Cleaners

We stock an extensive range of our own diamond tools, faceting accessories, rough and products.

We are Authorised dealers for:

**Diamond Pacific Tool Corp** – Nova, Genie, Bigfoot, Galaxy

**Barranca** - MK Diamond Saw Blades

**Lortone** - Cabbing Machines, Saws, Rotary Tumblers

**Saeshin** - "Strong" Micro Motors

**Cratex** - Rubberised Abrasives

**Crystalite** - Diamond Laps, Crystal Pads, Poly Pads, Flexo Pads

**Klingspor** - Industrial Grade Sanding Sheets, Belts & Disks

**GemPro** - Flex Wheels, Resin Bonded Diamond Products

**Jersey Instruments** – Faceting Machines

36A Smith Drive  
Ballina NSW 2478  
Ph. 02 66811686  
A/H 0427 012 014  
Brian & Liz

MAIL  
PHONE &  
INTERNET  
ORDERS

[www.gemcuts.com.au](http://www.gemcuts.com.au)

# EXHIBITIONS & EVENTS



## December

2-3 Nepean District Lapidary Club, Gems Out West, St Marys Memorial Hall, NSW

## 2018

### January

6-7 Warrnambool Gem Club 50th Anniversary Gem Show, Warrnambool Public School Hall, Vic

20-21 Warragul Lapidary Club Gem Show, Yarragon Hall, Vic

27-28 Riverland Gem & Mineral Club Show, Loxton Lutheran School, SA

### February

23-25 2018 Royal Canberra Show Crafts Expo (Lapidary & Allied Crafts), Exhibition Park, Canberra, ACT

### March

10-11 Combined Victorian Gem Clubs, Gem, Mineral & Fossil Show (GEMKHANA), Hungarian Community Centre, Wantima, Vic

17-18 Hobart Gem, Mineral & Fossil Show, Hobart Showground, Glenorchy, Tas

17-18 New England Lapidary & Fossicking Club Inc, 27th Annual Gem & Craft Show, Armidale Showground, NSW

24 Campbelltown & Districts Open Day, Clubhouse, Macquarie Fields, NSW

24-25 Devonport Lapidary Club Jewellery, Gem & Mineral Fair, East Devonport School Gymnasium, Tas

24-25 Grafton Gem & Lapidary Club, Gems, Minerals and Fossils Show, Grafton Showground, NSW

30-2 April **GEMBOREE**, 54th National Gem & Mineral Show, Willunga Park Reserve, SA

### July

Enfield Gem & Mineral Club Biennial Gem & Mineral Show, Enfield Primary School, SA



Left: Port Hacking member, Debra Thompson, was awarded first prize for this square cut spinel.

Enamelled box by G&LC President, Barbara Try.

## **CLUB *G&L*NEWS SUBSCRIPTIONS**

**REMINDER:** Club subscriptions to the *G&L*News are now DUE. Please contact the Secretary to arrange postal renewals, or subscribe online for FREE! ♥



# **NEXT BIG EVENT**

## **54th National Gem & Mineral Show**



# **GEMBOREE**

**March 30-April 2**

Willunga Park Reserve  
Willunga, SA

