



Gem & Lapidary News

December 2015

Vol. 41 No 12

Print Post Approved PP243352/00002

Gem & Lapidary News is the official publication of the GEM AND LAPIDARY COUNCIL of NEW SOUTH WALES Inc, PO Box 4233, Londonderry NSW, 2753. The executive and workforce of the Council are entirely composed of delegates from member Clubs. Council is NOT an autonomous body. The Gem & Lapidary Council is a member of AFLACA (Australian Federation of Lapidary and Allied Crafts Association).

Life Councillors: Joan Ball, Ron Beattie, Maurya Hutton, Arthur Roffey, Dot Caladine (dec), Frank Hall (dec), Marie Jenkins (dec), Dick Moppett (dec) & Bob Wright (dec).

EXECUTIVE

| | |
|----------------------------|--|
| President | Barbara Try (Northern Districts) 0417 676435 |
| Vice Presidents: | Colin Wright (Hacking) Tony Try (Central Coast) |
| Secretary | Arthur Roffey (Min Soc) 02 45725812 crystalhabit@bigpond.com |
| Minute Secretary | Marilyn Behrens (Parramatta-Holroyd) 02 96358218 |
| Assistant Minute Secretary | Mick Lane (Blue Mountains) |
| Treasurer | John Behrens (Parramatta-Holroyd) 02 96358218 |
| Assistant Treasurer | John Vincent (Hawkesbury Valley) |
| Committee: | Ron Jones (Parramatta-Holroyd) Wally Dove (Port Hacking) Marcia Hill (Western Suburbs) |

Appointments

| | |
|---------------------|---|
| Public Officer | John Vincent |
| Honorary Auditor | J Smith (OAM, FCPA, MACS, PCP) |
| Editor | Theresa Mason (BA hons, ADA) editor@gemlapidarycouncilnsw.org.au |
| Equipment Officer | John Behrens |
| Competition Judges: | Wally Dove John Behrens |

HOTLINE to the COUNCIL - 0427 993903

Website: <http://www.gemlapidarycouncilnsw.org.au/>
Webmaster: Alex Maitland - Please send updated information
webmaster@gemlapidarycouncilnsw.org.au

COUNCIL MEETINGS

EXECUTIVE - Meet monthly, fourth Wednesday of the month, 1pm, at Clubrooms,
Parramatta-Holroyd Lapidary Club, 73 Fullager Rd, Wentworthville NSW

Visitors welcome to attend

SUBSCRIPTIONS to the Gem & Lapidary News

\$20 if posted bulk to your Club
\$25 if posted to members' private address
\$30 for non-members of the G&L Council
Free online subscriptions (see website for details) NB: colour version available online

ADVERTISING RATES per G&L News issue (NB: printed in black & white)

Full page - \$40 per issue
1/2 page - \$25
1/3 page - \$20

Please send payment with advertising booking and copy

CONTENTS

| | |
|--------------------------------------|---------|
| G&L Council News & Information | page 5 |
| GEMBOREE® 2016 | page 6 |
| Carving & Selling Emu Eggs | page 7 |
| Changes to GEMBOREE Entry Form | page 7 |
| Club News | page 8 |
| Fossils Found: Gold Coast Hinterland | page 11 |
| GEMKHANA® Award Winner Story | page 12 |
| Exhibitions & Events | page 19 |

NEXT COUNCIL MEETING

Wednesday December 9th at the Clubrooms, Parramatta-Holroyd
Lapidary Club, 73 Fullagar Rd, Wentworthville, 1pm

This will be followed by the AGM, then a Christmas afternoon tea –
please bring a plate

Please attend - you will be made very welcome

DEADLINE FOR FEBRUARY 2016 ISSUE

January 20 (third Wednesday of the month, plus a few days grace)

ATTENTION: CLUB EDITORS

Please add me to your mailing list to receive your Club newsletters, Ed

Disclaimer:

Opinions expressed are those of the original authors and do not necessarily reflect those of the Editor, Gem & Lapidary Council, or its members. Persons acting on any opinion, advice, fact or advertisement published in this issue does so at their own risk.



Sterling Silver

Your Best Option



Best Prices
Best Range
Best Quality
Made in Australia
Environmentally Friendly

Silver, Gold, Findings, Settings, Chain,
Bi-Metals, Cords, Specialty Alloys

[p] 1300 360 598
[f] 02 8568 4240
[e] sales@aemetal.com.au

68 Smith Street
Marrickville
NSW 2204

A&E

A&E METAL MERCHANTS

www.aemetal.com.au

COUNCIL NEWS & INFORMATION

Minutes from G&L Council Meeting, 25 November 2015

The meeting was opened at 1.20pm by President Barbara Try (Northern Districts) who welcomed delegates from the following clubs: Minsoc (Arthur Roffey OAM), Central Coast (Tony Try), Western Suburbs (Marcia Hill), Blaxland (Pam & Alec Gardiner), Blue Mountains (Mick Lane), Port Hacking (Col Wright & Wally Dove), Hawkesbury Valley (John Vincent), Goulburn (Sue & Joe O'Neil), Parramatta-Holroyd (Ron Jones, John & Marilyn Behrens), and visitor Brian Beauchamp.

J&R Report:

The judging forums were well attended by judges and competitors.

Editor's Report: give Theresa Mick's correct address.

Education Report: nothing to report

2016 GEMKHANA Report: October 1-2-3

Our application to use Hawkesbury Showground next year is awaiting approval by their committee.

The competition schedule is drawn up and ready for the J&R panel's scrutiny.

GEMBOREE 2017: Lithgow – Easter

The badges are to hand, but not to the quality sought. Barbara will follow up.

Campsites are limited, so please book early. Other accommodation will also be in short supply because there are other major events, so bookings there should also be made early.

Planning is well in hand and the booklet will soon be ready for proofing.

Showcase renovations will be done before the next GEMKHANA.

Don't forget the next GEMBOREE meeting is before the February general meeting: February 24 at 11am.

GENERAL BUSINESS:

1. Next month will be the AGM
2. Secretary neglected to send nomination forms with the last minutes.

Joe O'Neil agreed to be returning officer at the elections.

The meeting closed at 1.50pm.

Next meeting: Wednesday, December 9, 2015 at 1pm, followed by the AGM.

The meetings will be followed by a Christmas afternoon tea – please bring a plate. All welcome, at 73 Fullagar Rd, Wentworthville

GEMBOREE 2016

GEMBOREE is the national gem and mineral show run by the Australian Federation of Lapidary & Allied Crafts Associations Inc (AFLACA). The 52nd National Gem & Mineral Show, GEMBOREE 2016, will be held in Ulverstone, Tasmania 25-29th March.

AFLACA is comprised of state associations and member organisations from around Australia. State members include: Australia Facetors' Guild (AFG), Gem and Lapidary Council of New South Wales Inc (G&LCNSW), Gem and Mineral Clubs Association of South Australia (GMCASA), Lapidary Association of Western Australia Incorporated (LAWA), Queensland Lapidary and Allied Craft Clubs Association Incorporated (QLACCA), Queensland Gem Clubs Association Incorporated (QGCA), Tasmania Lapidary and Mineral Association Incorporated (TLMA), and Victoria Gem Clubs Association (VGCA).

For more information on the upcoming GEMBOREE and information about entering in this national competition of lapidaries and associated craft, check out the AFLACA website: <http://aflaca.org.au/>

NB: Entry forms, fees, and entries with return postage, must be received by 15 January 2016.

Robilt Lapidary Supplies

167 Endeavour Drive, North Cranbourne 3977

P.O. Box 179 Doveton, Victoria 3177

Ph: (03) 5996 0750 Fax: (03) 5995 7505 Mob: 0414 469 203

ABN 37 856 874 788

Email: robilt@unite.com.au

Manufacturers of Lapidary Machines for over 45 years

Tumblers – Trimsaws – Slabsaws – Grinders - Polishers

Vibro Laps – Flat Laps – Faceting & Combination Machines

Suppliers of Grits – Laps – Wheels – Blades – Dops – Discs.

Service – Repairs – Spare Parts - Rough – Cut – Polished Stones

Servicing Your Lapidary Needs

CARVING & SELLING EMU EGGS

NSW Lapidary Club member, Kathy Selwood, recently contacted the National Parks & Wildlife Service for information about emu eggs. This is their response:

A licence is required to possess, carve and sell eggs. For an application form and information, go to: <http://www.environment.nsw.gov.au/wildlifelicences/Emueggcarving.htm>

Carved eggs with a licensing number or mark etched on them can be on sold without a licence, or given away.

For any uncarved or unmarked eggs, you will need to advise us on the numbers you have and where you got them from, then apply to carve and/or sell them under licence. Eggs from captive sources only can be sold. Alternatively they can be given to someone else authorised to possess them (another emu egg licensee or an indigenous person), but cannot be sold without a licence.

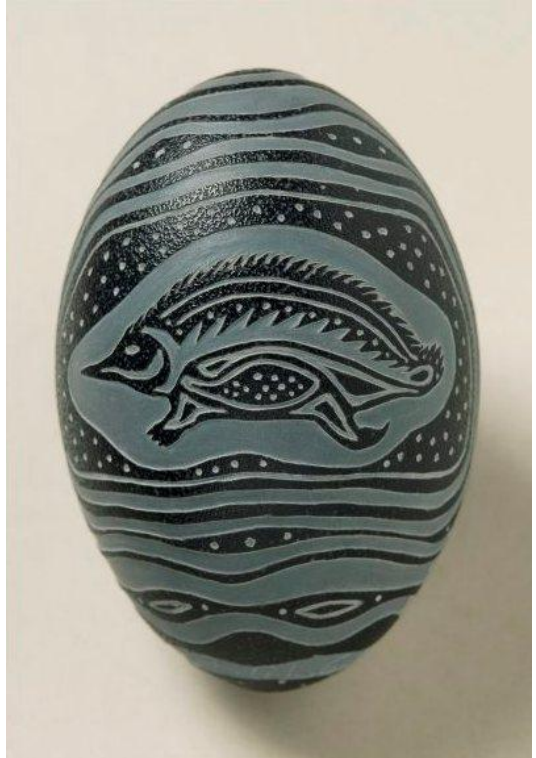


Image from <http://australianmuseum.net.au/image/carved-emu-egg-e085855-001-badger-bates>

CHANGES TO THE GEMBOREE 2016 ENTRY FORM

There has been an error on the **Entry form** for the next GEMBOREE.

Section I 18B.2 should be O 18B.2

Section N 18B.3 should be I 18B.3

Section N 18B.4 is missing

The AFLACA website has been adjusted and a corrected entry form is available.



CLUB NEWS

Campbelltown Lapidary Club extend their thanks to everyone who helped with the Club Open Day, set-up and pack-down. A special thanks go to two new Club members for their weeks of work ensuring the success of the Club stall, and with the clean-up. The day was a great success with the kitchen work, BBQ, and variety of stalls. The Club asks that members please make any new Club members feel welcome and help them get started as happy, active members.

GEMBOREE 2016 is to be held at Ulverstone Showgrounds in Tasmania on March 25-29th. Registrations are being taken and sites are filling up fast. Check the Australian Federation of Lapidary and Allied Crafts Associations website for more info: <http://aflaca.org.au/gemboree/>

Clubs should keep in mind that any Club that assists with the practical running/organising of the GEMBOREE will be allowed FREE tailgating space at the GEMBOREE for the duration of the event.

Keep in mind that material sold at the free tailgating stall MUST be Club material, that is, it is not to be owned by an individual. It is aimed to benefit the Club as a whole.

Goulburn Gem Society ran gem tree classes for a three-week block during November. The Club report that their members have done well at all the gem shows during 2015, with the juniors excelling at GEMKHANA with silver and bronze medals. Members are preparing stones for the national GEMBOREE lapidary competition in Tasmania. They are also again planning a Club presence at the Goulburn Show in March.

Inverell & District Lapidary Club enjoyed a successful Gem & Craft Show, with visiting Clubs from Queensland, Victoria and New South Wales. The Club had had approximately 40 tables set up for traders inside the pavilion with around 10 stalls set up outside. Some of the highlights included the fossicking field trips with good finds at Lone Star and King Conrad mine sites, BBQ and socialising, and a well attended wire-wrapping class. The recent newsletter

BLUE GEMS.com.au

ABN 62669458316

'Djuloom' North Arm Rd, Bowraville NSW 2449

Ph: 65 644119

**MINERAL COLLECTIONS
PURCHASED**

Gold, Silver, Jewellery Supplies

TOP SHELF MINERALS



The traders pavilion at the Inverell & District's Gem & Craft Show in October.
Photo by Julie Michel.

also featured a 'digging the dirt' interview with member of the month, Ron, whose favourite fossicking place is Copeton Dam, favourite piece is a carnelian 'carrot' from Bellata, and favourite craft is faceting. Ron says he would like to fossick at Yowah.

Lismore Gem & Lapidary Club raised concerns over a decline in attendance of members to general meetings, following a very well attended AGM. They urge members to play an active part in running the Club. At the next meeting,

Bryan will give a talk on visible mineral fluorescence.

The **Northern Districts Lapidary Club** re-started a 'competition cutters' group each Friday night, the rules being that the work members produce must be entered in Club, state (GEMKHANA) or national (GEMBOREE) competitions. Entering competitions is a great way to hone your lapidary skills, have your work assessed, and improve performance. Congratulations to the Club's newly appointed life member, Lou Sun, who, with his wife, joined the Club in 2002, and has served on committees, made slabs and stones for Club sales, and is now behind-the-scenes tirelessly categorising the Club's vast rock collection. Their upcoming Christmas party includes the mysterious 'tombola' (donated surplus array of items for the raffle), and members' display of works for the in-Club 'Wow!' awards (judged on aesthetic appeal; no prizes).

The **Parramatta-Holroyd Lapidary Club** congratulates all those who entered the GEMKHANA competition, especially all the competition winners. Although the weather was extremely hot, the GEMKHANA went very well and was well attended. At the last Club meeting, visiting member, Ron from the Inverell



australian lapidary supplies

For 50 years we have been manufacturing and supplying quality base metal Findings and Mountings to Lapidary and Craft enthusiasts.

Shop online for a large range of:

Findings

Chains – Neck chains and Bulk chain

Mountings: Rings, Pendants, Brooches, Bracelets etc.

Snap –Tite™ Settings – Sterling Silver and Gold Filled

Discounted and close-out Specials

www.australianlapidarysupplies.com.au

Phone: 02 95318922 Email: sales@australianlapidarysupplies.com.au

Discount for Lapidary Clubs and Members

Simply order online and type in coupon code: **lapidary** at checkout.

Club, gave a wonderful and informative presentation on all aspects of opals. A book on chain mail has been purchased for the library for all the enthusiasts. Their Club newsletter also featured an interesting article on igneous rocks.

FOSSILS FOUND: GOLD COAST HINTERLAND

Fossilised remains of a 23-million-year-old rainforest were unearthed by a local hiking near his home in the Gold Coast hinterland and taken to a Queensland Museum palaeobotanist for identification. So far, up to 20 different leaf types have been discovered, with more field work planned over the next six months.

According to ABC News, "The material is now believed to be from the Miocene Epoch — when Australia had broken away from Antarctica and was starting to drift northwards towards its current position, and northern Australia was covered in lush rainforest."



"Dr Rozefelds says, 'We've got about six drawers of specimens at this stage', and some of the fossilised remains look a lot like eucalyptus leaves."

Two museum volunteers, Desley Faulkner and June Richardson, are assisting with the analysis. According to the article, "Mrs Faulkner now has the job of doing detailed drawings of the venation or veins of each fossilised leaf, so they can be better identified while Ms Richardson, a retired librarian, catalogues the discoveries. Dr Rozefelds said it was a great effort of amateurs and professionals working together to shed light on a period of time of which little is known. 'They've provided the really important initial work to get this project moving,' he said."

Info & image from <http://www.abc.net.au/news/2015-09-07/gold-coast-fossils/6756612>

GEMKHANA AWARD WINNER STORY

Story by Liz Weatherburn (Lismore Gem and Lapidary Club)

I joined Lismore Gem and Lapidary Club August 2014. I still remember my first day. I was so nervous that when I was using the trim saw I thought I would lose a couple of fingers I was shaking so much. Then using the grinding wheels I grinded some of my nails and knuckles. But that did not stop me. I persevered.

The making of my free form facet Smokey Quartz was a challenge, working out how to make the stone sing. Worked on flat top to form the facets shaping until the stone felt right. Ended up with 10 facets. The stone then started to sing. Working flat lap on all facets starting with 240 grit up to 1200 grit. Making sure the stone was held flat to produce the perfect surface. Numbering each side made it easier to keep track what was done. Polishing was important. Checking all the time if any flaws. Stone should not have any. Perfect polish needed to enhance the stone.



Liz and Bob at the Lismore Gem & Lapidary Club workshop. Photos by Bill Portman.

The Endeavour Wave Brazilian Agate: The Endeavour wave was created by Bob Maher, Lismore Gem and Lapidary Club, for the National bicentennial competition to design and name a new lapidary cut. The gemstones are cut with two identical cylindrical surfaces at 90 degrees to each other.

Firstly the stone is slabbed and cut into a square using trim saw. The stone is doped same as for cabbing. A grinder is used to produce the outline of the shape. Shaped and sanded. Re-dop stone on other side for the second curve, which is at 90 degree angle to first. Sanding is completed in a steel pipe starting with 220 grit. Mark stone with permanent marker as this will highlight any low points so you know where to sand. Placing grit into tube and run back and forth along the entire length of the pipe. While doing this also rock stone side to side. Periodically turn the stone or the pipe 180 degrees so the pipe wears evenly. Dop second side and follow same process. Polishing is done on a flat lap.

I have also worked with Ribbon Stone, Obsidian, Serpentine, Clear quartz, Mookaite, and many types of agate, making cabochons and free form shapes.

I am so pleased my first competition scored Highly Commended Novice Free Form, and better still 1st place for Intermediate Free Form. I entered stones to get feedback to help me improve. This certainly was not what I expected.

Thank you to Leonie Hyde who encouraged me to join the club and for introducing me to a wonderful man, Bob Maher, who became my teacher and mentor. Also a very special mention to my Father and Mother-in-law, John and Gina Weatherburn (Northern Districts Club) for planting the seed many years ago. Without these people what I achieved would not have come into fruition. Looking forward to more creations and competitions. I am now hooked on Rocks...





Gemcuts

*Lapidary * Fossicking
* Jewellery Making Tools



Cabbing



Tumbling



Jewellery Tools



Carving



Sawing



Ultrasonic Cleaners

We stock an extensive range of our own diamond tools, faceting accessories, rough and products.

We are Authorised dealers for:

Diamond Pacific Tool Corp – Nova, Genie, Bigfoot, Galaxy

Barranca - MK Diamond Saw Blades

Lortone - Cabbing Machines, Saws, Rotary Tumblers

Saeshin - "Strong" Micro Motors

Cratex - Rubberised Abrasives

Crystalite - Diamond Laps, Crystal Pads, Poly Pads, Flexo Pads

Klingspor - Industrial Grade Sanding Sheets, Belts & Disks

GemPro - Flex Wheels, Resin Bonded Diamond Products

Jersey Instruments – Faceting Machines

36A Smith Drive
Ballina NSW 2478
Ph. 02 66811686
A/H 0427 012 014
Brian & Liz

MAIL
PHONE &
INTERNET
ORDERS

www.gemcuts.com.au

EXHIBITIONS & EVENTS

December

- 5-6 Nepean Lapidary Club Show Day Nepean Club House, St Marys, NSW
5-6 Sydney Crystal Show Fraser Park, Marrickville, NSW

***G&L News* wish all our Clubs, readers & advertisers
a safe and happy holiday season ♥**

2016

January

NB: There is NO January edition of *G&L News*

- 9-10 Warrnambool Gem Show Warrnambool Primary School Hall, Vic

February

- 28 Alexandra & Eildon District Lapidary Club Gem Fair, Thornton Football Ground,
Thornton, Vic

March

- 12 Campbelltown & District Lapidary Club Open Day, Clubhouse, Macquarie Fields, NSW
12-13 Victorian GEMKHANA Centenary Hall, Norlane, Vic
19-20 New England Lapidary & Fossicking Club 25th Annual Gem & Craft Show
Armidale Showground, NSW
25-29 GEMBOREE 2016 Ulverstone Showgrounds, Tasmania

July

- 9-10 Campbelltown & District Lapidary Club Gem, Mineral & Jewellery Show, Greg
Percival Community Centre, Ingleburn, NSW

CONTACT THE EDITOR TO INCLUDE YOUR STATE/NATIONAL CLUB EVENTS

editor@gemlapidarycouncilnsw.org.au

REMINDER

Please forward any changes of Club contact details to the G&L Council Secretary to ensure that the NSW G&L Club Index page is current. It is very upsetting when a member of the public is trying to contact a Club by their listed contact, only to find the person has passed away and they have unnecessarily caused distress to a widow. Clubs are responsible for ensuring all contact details are correct. Please take a moment to check your Club information is current: <http://gemlapidarycouncilnsw.org.au/clubs/>

**NEXT BIG EVENT
FOR THE
GEM & LAPIDARY COUNCIL**



GEMBOREE

March 25-29

Ulverstone Showgrounds, Tasmania

