

Gem & Lapidary News

November 2016

Vol. 42 No 11

Print Post Approved PP243352/00002

Gem & Lapidary News is the official publication of the GEM AND LAPIDARY COUNCIL of NEW SOUTH WALES Inc, PO Box 163, Wentworthville, NSW, 2145. The executive and workforce of the Council are entirely composed of delegates from member Clubs. Council is NOT an autonomous body. The Gem & Lapidary Council is a member of AFLACA (Australian Federation of Lapidary and Allied Crafts Association).

Life Councillors: Joan Ball, Ron Beattie, Arthur Roffey, Frank Hall (dec), Dot Caladine (dec), Maurya Hutton (dec), Marie Jenkins (dec), Dick Moppett (dec) & Bob Wright (dec).

EXECUTIVE

President	Barbara Try (Northern Districts) 0417 676435
Vice Presidents:	Colin Wright (Port Hacking) Tony Try (Central Coast)
Secretary	Marilyn Behrens (Parramatta-Holroyd) 02 96358218 secretary@gemlapidarycouncilnsw.org.au
Minute Secretary	Mick Lane (Blue Mountains)
Treasurer	John Behrens (Parramatta-Holroyd) 02 96358218
Assistant Treasurer	Arthur Roffey (Mineralogical Society)
Committee:	Wally Dove (Port Hacking) Sue O'Neil (Goulburn Gem Society) John Vincent (Hawkesbury Valley)

Appointments

Public Officer	John Vincent
Auditor	Christine Gruntar
Editor	Theresa Mason (BA hons, ADA) editor@gemlapidarycouncilnsw.org.au
Webmaster	Alex Maitland webmaster@gemlapidarycouncilnsw.org.au
Property-Equipment Officer	John Behrens
Competition Judges:	Wally Dove & John Behrens
Education Officer	vacant
GEMBOREE Coordinator	Col Wright
GEMKHANA Coordinator	vacant
Printer	Arthur Roffey

Website: <http://www.gemlapidarycouncilnsw.org.au/>

COUNCIL MEETINGS

EXECUTIVE - Meet monthly, fourth Wednesday of the month, 1pm, at Clubrooms, Parramatta-Holroyd Lapidary Club, 73 Fullager Rd, Wentworthville NSW

Visitors welcome to attend

SUBSCRIPTIONS to the Gem & Lapidary News

\$20 if posted bulk to your Club
\$25 if posted to members' private address
\$30 for non-members of the G&L Council

Free online subscriptions (see website for details) NB: colour version available online

ADVERTISING RATES per G&L News issue (NB: printed in black & white)

Full page - \$40 per issue
1/2 page - \$25
1/3 page - \$20

Please send payment with advertising booking and copy

CONTENTS

G&L Council News & Information	page 5
Indigenous 'Stonehenge'	page 7
Club News	page 8
GEMBOREE® 2017	page 12
Report on GEMKHANA® 2016	page 13
GEMKHANA Raffle Results	page 13
Exhibitions & Events	page 15

**NB: CHANGE OF POSTAL ADDRESS
FOR THE G&LC NSW**

Gem & Lapidary Council NSW, PO Box 163, Wentworthville NSW, 2145

NEXT COUNCIL MEETING

Wednesday November 23, at the Clubrooms, Parramatta-Holroyd
Lapidary Club, 73 Fullagar Rd, Wentworthville, 1pm

Please attend - you will be made very welcome ♥

DEADLINE FOR NOVEMBER 2016 ISSUE

November 16 (third Wednesday of the month, plus a few days grace)

CONTACT THE G&L EDITOR TO INCLUDE YOUR CLUB'S NEWS
editor@gemplapidarycouncilnsw.org.au

Disclaimer:

Opinions expressed are those of the original authors and do not necessarily reflect those of the Editor, Gem & Lapidary Council, or its members. Persons acting on any opinion, advice, fact or advertisement published in this issue does so at their own risk.

A&E METALS

ORDER ONLINE TODAY AT
aemetal.com.au



The A&E Metals branded range of silver and industrial related precious metal products is the only Australian mass produced range of silver based fabricated metal products. A&E Metals is also the exclusive Australian distributor of **Argentium®**.

A&E
METALS
A PALLION COMPANY

A&E METALS HEAD OFFICE

68 Smith Street Marrickville NSW 2204 Australia
P: +61 2 8568 4200 | F: +61 2 8568 4240 | E: info@aemetal.com.au

**AUSTRALIA WIDE
1300 360 598**

aemetal.com.au



G&L COUNCIL NEWS & INFORMATION

Minutes from G&L Council Meeting,

The meeting was opened at 1.25pm by President, Barbara Try (NDLC), who welcomed delegates from the following Clubs: Mineral Society (Arthur Roffey OAM), Central Coast (Tony Try), Blaxland (Pam & Alec Gardiner), Western Suburbs (Marcia Hill, Shirley & Ainslie Flynn), Hawkesbury Valley (John Vincent), Port Hacking (Col Wright), Goulburn (Sue & Joe O'Neil), Parramatta-Holroyd (John & Marilyn Behrens), NSW (Lilly Murphy). **Apologies:** Bankstown (Joan Ball OAM), Blue Mountains (Una King & Mick Lane).

J&R Report: Judging is finished for the year. Col reported on Illawarra Club's judging day. GEMKHANA competition went well. Thank you everyone. Barbara will soon be running a jewellery judging course in Melbourne.

G&L News: Theresa noted the October issue had an extra four pages due to extra advertisers and content. The coming issue will be back to 16 pages. Asked for a hard copy of the *G&L News* be sent to her for her records. Not received the October issue yet. Asked her to add herself to the labels she sends for the mailing and will include October when sending November. Also noted she currently receives emailed newsletters from Campbelltown, Canberra, Parramatta-Holroyd, Lismore, Inverell and Casino, and the GEMBOREE 2017 newsletter. Other Clubs that produce a digital version might like to send it directly to the editor at editor@gemlapidarycouncilnsw.org.au. Meeting agreed to Marilyn purchasing 500 pre-paid envelopes.

Education Report: nothing to report

GEMKHANA Report: Noted the entry fee needs to be updated on the website. An incident brought our public liability insurance into action when a seat collapsed outside the pavilion. Webster Hyde Heath is corresponding with the lady involved and Barbara is holding the file until the matter is settled. Other than that incident, everyone felt the show was very good and everyone was thanked for their work. Pam noted setting up and dismantling went well. Arthur spoke to the people from whom we hired the tables about their quality, and he assured Arthur they would be better for the GEMBOREE. Because we needed so many, they had to bring them from other hirers and they weren't properly checked. After considerable discussion, it was agreed to hold a GEMKHANA next year, ie 2017, on the motion of Port Hacking, seconded Western Suburbs. Many of the people who have worked for years won't be involved in planning, but will still support the show. Venues being considered are Queanbeyan, Gundagai, Goulburn, Wyong and Cessnock. Delegates have been asked to investigate the feasibility of the venues



BLUEGEMS.com.au

ABN 62669458316

54 Waratah St, Scotts Head, NSW 2447

Ph: 02 65697704

MINERAL COLLECTIONS

PURCHASED

Gold, Silver, Jewellery Supplies

TOP SHELF MINERALS

near them. As soon as the venue is decided, an entry will go into the *G&L News* and on the website.

GEMBOREE 2017 Lithgow – Easter: Dealer arrangements are being finalised. Opening times have been brought into line – Friday 10am to 5pm, Saturday & Sunday 9am to 5pm, Monday 9am to 1pm (although the competition section will close at noon).

General Business:

- Meetings next year will be January 25, February 22, March 22, April 26, May 24, June 28, July 26, August 23, September 20, October 25, November 22, December 12.
- Dealer contracts were discussed. A more formal document is now needed and cancellations need to be mentioned. Arthur and Marilyn will draft a new contract for next month. There is no rush in settling this because the next time a contract is needed is for the GEMKHANA.
- Alex has been webmaster for 10 years and is asking for a replacement. The job requires knowledge of Microsoft, Word and the Wordpress program. Alex has offered to help a new webmaster if necessary.

The meeting closed at 2.15pm.

Next meeting: Wednesday, 23 November, 2016, at 73 Fullagar Rd, Wentworthville

G&L Council NSW's website is gemlapidarycouncilnsw.org.au with links to the secretary, editor & webmaster.

AFLACA's website is www.aflaca.org.au



INDIGENOUS 'STONEHENGE'

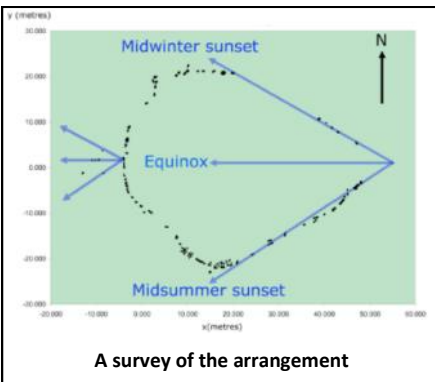
According to an ABC News story, scientists say an ancient Aboriginal site, on traditional land of the Wadda Wurrung peoples, 'could be the oldest astronomical observatory in the world, pre-dating Stonehenge'.

The Wurdi Youang stone arrangement west of Melbourne was formed using about 90 blocks of basalt whose arrangement identifies the equinox, the winter solstice and the summer solstice.

'Scientists studying the Wurdi Youang stone arrangement say it could date back more than 11,000 years and provide clues into the origins of agriculture.'

As reported on the ABC program, *Lateline*, thermoluminescence dating tests may be conducted to gain information of when the site was constructed. These testings have been used at other nearby artefact sites.

Dr Duane Hamacher, from Monash University, is 'a leader in the study of Indigenous astronomy and has been working with Aboriginal elders at the site to reconstruct their knowledge of the stars and planets.' He says early first Australians had complex knowledge systems, and 'understand very well the motions of the sun, the moon, the planets and the stars throughout the year and over longer periods of time... White Australians don't generally recognise that the history of colonialism has erased that, so what we're doing is helping the communities piece that information back together by working with communities.'



The Wurdi Youang stone arrangement

As Dr Hamacher says, 'I think the question we might have to ask is: is Stonehenge

Britain's version of Wurdi Youang? Because this could be much, much older.'

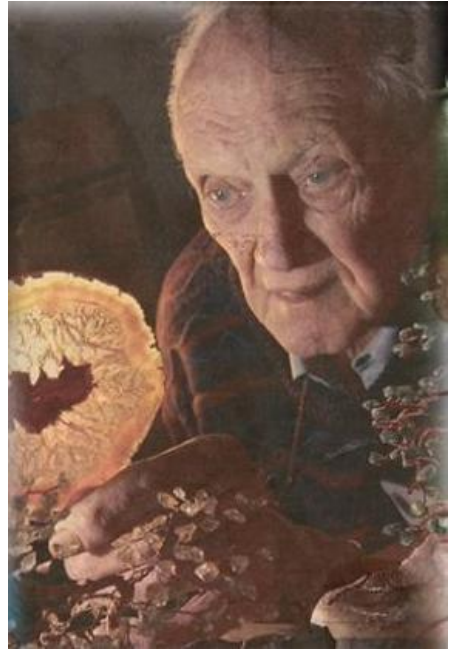
Custodian, Reg Abrahams, says that 'the region around the observatory seemed to have once had semi-permanent villages with evidence of early fishing and farming practices... You see a lot of agricultural and aquacultural practices, so evidence of this agriculture may go back tens of thousands of years, pre-dating what anthropologists commonly think of as the dawn of agriculture which is about 6,000 years ago in Mesopotamia'.

(**information from:** <http://mobile.abc.net.au/news/2016-10-12/aboriginal-astronomy-provides-clues-to-ancient-life/7925024?pfmredir=sm> & <http://www.abc.net.au/lateline/content/2016/s4555524.htm> & <https://www.theguardian.com/australia-news/2016/oct/13/australian-rock-formation-could-be-older-than-stonehenge-researchers-say> & https://en.wikipedia.org/wiki/Wurdi_Youang & **images from:** <http://mobile.abc.net.au/news/2016-10-12/aboriginal-astronomy-provides-clues-to-ancient-life/7925024?pfmredir=sm> & <https://en.wikipedia.org/w/index.php?curid=38675934>)



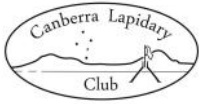
CLUB NEWS

Campbelltown Lapidary Club was awarded a certificate for its 50 years of service to the community, and will have a special 50th anniversary dinner on the 26th of this month in place of their Christmas party. The president reported a successful year, with extensive membership expertise in assisting new members in lapidary crafts, improvements to the Clubhouse including new benchtops, display units, air conditioning, fencing, improved lighting, and garden beautification taking place. Thanks were extended to the duty officers for their tireless work, and also to the executive and committee, and their Club patron. The two major field trips were a lot of fun, the two open days produced great results, and the annual club exhibition was an overwhelming success. The newsletter featured a lovely eulogy on the Club's longest serving member, Bob Pullen, who sadly passed away recently. A member of the Master Facetor's guild and a master craftsman in cabbing, Bob was incredibly knowledgeable about rocks. As said, 'We've never been able to show him a rock that he couldn't identify. He could not only identify them but can tell you what country they came from.' The Club members are going to miss Bob very much. 'Bob did so many things around the club, we only think we know what he did. It is when things don't get done that once again the pain of his loss will flare up when we remember, "Bob used to do that".'



Bob Pullen, from Campbelltown Club

Canberra Lapidary Club invites entries for the 2017 Royal Canberra Show Crafts Expo (Lapidary & Allied Crafts), which the Club are organising and sponsoring. Show dates are 24-26th February 2017. Club members are encouraged to enter. Last month's interactive social meeting was examining and identifying 20 minerals and five rocks, with members spilt into groups to put their collective heads together for the answer (use of reference books and scientific equipment permitted). The newsletter reports this format has always been fun and informative, and is especially of interest to newer members. The field excursion to Ollan Falls on the Shoalhaven River was attended by eight people chasing gold from gravel and adjacent alluvial debris of the river around



the crossing.
 'Metal detecting turned up lots of fence wire, and those who panned found a few specks of gold, plus other odds and ends.' The Club's annual rock auction saw a lot of bargains to be had. Repairs are currently underway on some machines in the workshop, which should be completed soon.



Goulburn Gem Society have their Club Christmas dinner coming up on the 17th of this month.

The **Hawkesbury Valley Lapidary Club** are co-hosting the Windsor Gem & Mineral Fair on 26-27th of this month at the Windsor Function Centre in Western Sydney, open 9.30am till 5pm on Saturday and 9.30am till 4pm on Sunday. There will be a number of traders from around Australia featuring their wares, as well as displays and

Robilt Lapidary Supplies

167 Endeavour Drive, North Cranbourne 3977

P.O. Box 179 Doveton, Victoria 3177

Ph: (03) 5996 0750 Fax: (03) 5995 7505 Mob: 0414 469 203

ABN 37 856 874 788

Email: robilt@unite.com.au

Manufacturers of Lapidary Machines for over 45 years

Tumblers – Trimsaws – Slabsaws – Grinders - Polishers

Vibro Laps – Flat Laps – Faceting & Combination Machines

Suppliers of Grits – Laps – Wheels – Blades – Dops – Discs.

Service – Repairs – Spare Parts - Rough – Cut – Polished Stones

Servicing Your Lapidary Needs

demonstrations by Club members. It should be a great day out for the whole family. Adults \$7, kids with parent/s are free!

Illawarra Lapidary Club have their Jewellery, Gems and Mineral Festival on this month at the Heining Hall, Princes Hwy, Dapto, from 5th-6th November. Times are Saturday 9am-4pm and Sunday 9am-2.30pm. This will be the Club's 54th anniversary exhibition, and will feature demonstrations of cabochon cutting, jewellery making, gemstone faceting, silvercraft, jewellery valuations, and Club and fossicking information. Dealers will be selling lapidary supplies, jewellery, minerals, crystals, fossils, beads and opals. There's lucky door prizes, children's games, raffle, and refreshments available. Admission is \$3, children free.

Lismore Lapidary Club had a presence at the recent Lismore Show, promoting the Club and selling lapidary items. The Club are planning a weekend gold fossicking trip to the Tooloom area on 20-21st November. The Club's Christmas Dinner is coming up early next month.

Newcastle Lapidary Club's Annual Gem Show is on from 12th-13th November at the Clubhouse, Dora Rd, Adamstown. Show times are Saturday 9am-4pm and Sunday 9am-3pm. There will be sales of gemstones, beads, silver, tools, and jewellery, with displays of faceting and jewellery making. Refreshments are available and entry is free.

The **Lapidary Club of NSW** is holding a fossicking field trip to the Oberon area this month looking for sapphires.

The **Northern Districts Lapidary Club** reported that following a committee meeting and survey of membership, the Club are purchasing silver equipment, including a pickle pot, for Club use. All input and ideas from members is encouraged so that the Club can grow and improve. The



The Club recently held an enamelling workshop, which produced some good works of art. A great time was had by all. Members are reminded that if you are clearing out or downsizing your collections, consider donating specimens to the Club so they may become someone else's treasure. The Club have their traditional field trip outing to Nundle from 18-21st of this month. The newsletter featured a lovely continuing story from Club member, Jorma, who has been on a trip. As well as many good finds of agate, on the way to Georgetown



Chiastolite found by Reeta

they turned off to a smaller dirt track, as wife Reetta was anxious to look for chiastolite, and after several hours, was suitably rewarded with two nice pieces.

Parramatta-Holroyd Lapidary Club have their 56th Annual Exhibition on this month, from 11-13th November at the Clubhouse in



Wentworthville. The theme is fossils. The new chairs, donated by the Mineralogical Society, are greatly appreciated. A new set of drawers has been purchased for enamellers, and quotes have been gained for purchasing cushions for the new chairs. A week-long trip is planned for January to Tingha and Inverell, and the trips committee have planned a weekend this month to Kangaroo Valley looking for jasper and petrified wood. Quotes have been gained for the kitchen renovations, and thanks extended to the members working on the showcase and shelves and arranging the display. Collections are currently being taken for the Christmas hamper, to be drawn at next month's Christmas Party on December 10th where all attendees will receive a ticket. All new members to the Club are presented with a Club badge and the Constitution and regulations. ♦

als **australian lapidary supplies**

For 50 years we have been manufacturing and supplying quality base metal Findings and Mountings to Lapidary and Craft enthusiasts.

Shop online for a large range of:

Findings

Chains – Neck chains and Bulk chain

Mountings: Rings, Pendants, Brooches, Bracelets etc.

Snap –Tite™ Settings – Sterling Silver and Gold Filled

Discounted and close-out Specials

www.australianlapidarysupplies.com.au

Phone: 02 95318922 Email: sales@australianlapidarysupplies.com.au

Discount for Lapidary Clubs and Members

Simply order online and type in coupon code: **lapidary** at checkout.

GEMBOREE 2017

53RD ANNUAL GEMBOREE

14TH-17TH APRIL, 2017

TONI LUCHETTI SHOWGROUNDS

LITHGOW, NSW



GEMBOREE is held by the Gem & Lapidary Council of NSW under the auspices of the Australian Federation of Lapidary & Allied Crafts Association (AFLACA).



In preparation for April's GEMBOREE, the hall layout has been drawn up with 20 dealers expected. The competition will have pride of place, so please make sure you get your entries in! Lots of entries will ensure visitors see a good variety of the work we amateur lapidarists can do. There are many trophies to compete for, including champion lapidary in junior, novice, intermediate and open sections. There is also the Ray Powell Trophy for the Champion Lapidary Club, and there are trophies for many sections. Entries close 11th February, 2017, so there's plenty of time to get your entries in!

During the Christmas break we plan to tidy up the showcases used for the competition. Some may need a touch of paint, others re-lining.

The camping layout has been finalised with over 140 powered and about 40 non-powered campsites. Accommodation around Lithgow is filling fast, as there are quite a few events over Easter in the area. The Tourist Office is very helpful in tracking down the type of off-site accommodation you may need. Contact them on 1300 760 276 or www.visitnsw.com/Lithgow.

Clubs that help in planning and running the GEMBOREE are being offered free tailgating space. Your own Club's public liability policy will cover you for this stall, and we will require a current certificate of currency. If you are planning on including your Club's stall, you will need to fill in and send a tailgating form to Ernst Holland, the Tailgating Chairman.

The competition schedule, registration and tailgating forms can be downloaded from the AFLACA website: <http://aflaca.org.au/gemboree/>

A GEMBOREE newsletter is available by email. If you would like a copy, just email Alan, at amcrae@lisp.com.au, to be added to the mailing list.

COMPETITION ENTRIES CLOSE 11 FEBRUARY 2017



REPORT ON GEMKHANA 2016

by Sue O'Neil, Goulburn Gem Society Inc.

GEMKHANA 2016 was held at the Clarendon Show Ground. Members from various Clubs came along to set up for the show a few days before it was open to the public. The show was open on the long weekend in October. There was a good attendance over those days. There were many dealers and plenty for people to look at and buy if they wished.



The kids activities were a great success. Children enjoyed the activities that were provided. The competition and displays were good to see. There

were many different sections and many hours of work went into these stones for the competition. We hope to have more juniors enter the competition in the future.

There were demonstrations throughout the show for people to see how to do and make things related to the skills of lapidary. There were raffles held each day of the show and many prizes to be won. The money raised from the proceeds of the raffle went to the Kurrajong Nursing Home. Thank you for all the donations to this raffle.

During the show the CWA catered with their Devonshire teas, great coffees and other yummy treats to eat. There was also a food van supplying good food.

Thank you to all the people that came to help set up, work throughout the show and then help pack it all away again. Without your help there wouldn't be a show. ♥

GEMKHANA RAFFLE RESULTS

Saturday: 1st Wal Dove, 2nd Jennifer Wood, 3rd Steve Resnick, 4th A Keith, 5th Garry, 6th Regina

Sunday: 1st Bec King, 2nd Shirley Harris, 3rd Leesa, 4th Val, 5th N Stolk, 6th R Baker

Monday: 1st Trish Deen, 2nd Col Wright, 3rd Rolf, 4th Judy

All prizes have been collected or delivered.

Gemcuts

*Lapidary * Fossicking
* Jewellery Making Tools



Cabbing



Tumbling



Jewellery Tools



Carving



Sawing



Ultrasonic Cleaners

We stock an extensive range of our own diamond tools, faceting accessories, rough and products.

We are Authorised dealers for:

Diamond Pacific Tool Corp – Nova, Genie, Bigfoot, Galaxy

Barranca - MK Diamond Saw Blades

Lortone - Cabbing Machines, Saws, Rotary Tumblers

Saeshin - "Strong" Micro Motors

Cratex - Rubberised Abrasives

Crystalite - Diamond Laps, Crystal Pads, Poly Pads, Flexo Pads

Klingspor - Industrial Grade Sanding Sheets, Belts & Disks

GemPro - Flex Wheels, Resin Bonded Diamond Products

Jersey Instruments – Faceting Machines

36A Smith Drive
Ballina NSW 2478
Ph. 02 66811686
A/H 0427 012 014
Brian & Liz

MAIL
PHONE &
INTERNET
ORDERS

www.gemcuts.com.au

November

- 5-6 Geelong Gem & Mineral Club Annual Exhibition, Centenary Hall, Norlane, Vic
5-6 Illawarra Lapidary Club 54th Anniversary Exhibition, Heining Hall, Dapto, NSW
5-6 Southern Rockhounds Annual Gemfair, Gerald Court, Christie Downs, SA
5-6 Zeehan Gem & Mineral Show Zeehan Primary School, Tas
11-13 Parramatta-Holroyd Lapidary Club Exhibition, Clubhouse, Fullagar Rd, Wentworthville, NSW
12-13 Newcastle Lapidary Club Gem Show, Clubhouse, Dora Rd, Adamstown, NSW
12-13 Launceston Gem Show Elphin Sports Centre, Launceston, Tas
12-13 Bundaberg Gem and Mineral Society Gemfair, Civic Centre, Bundaberg, Qld
13 Cheong Park Gem & Mineral Club Rock Swap, Clubhouse, Croyden South, Vic
19 Suncoast Gem & Fossicking Club Show, Mooloolaba State School, Qld
26-27 Windsor Gem & Mineral Fair Windsor Function Centre, Windsor, NSW

December

- 3-4 Sydney Crystal Show Fraser Park, Marrickville Road, Sydney, NSW

2017

February

- 24-26 Royal Canberra Show Crafts Competition, Exhibition Park, Canberra, ACT

March

- 11-12 Victorian GEMKHANA, Gem & Mineral Show, Quest Shepparton Racing Complex, Kialla, Vic
18-19 Canberra Lapidary Club Rock Swap, Wagtail Way, Exhibition Park, Canberra, ACT

April

- 14-17 GEMBOREE 2017, 53rd National Gem & Mineral Show, Toni Luchetti Showgrounds, Lithgow, NSW

May

- 27-28 Canberra Lapidary Club Winter Gem Show, Mallee Pavilion, Exhibition Park, Canberra, ACT

October

- 5-8 National Gem & Mineral Show, North Shore Events Centre, Wairau Valley, Auckland, NZ



**NEXT BIG EVENT
FOR THE
GEM & LAPIDARY COUNCIL NSW**



GEMBOREE

April 14-17

Tony Luchetti Showgrounds

Lithgow, NSW

